

Pablo's ATH 2024: Solution Document

Steve Hames (mainly), Roger Thetford and Philip Mitchell

Version 2, 24 January 2025 — minor corrections, new Treasure Location section, new Footpath Perambulation section, list of all the locks and bridges

Version 3. 24 February 2025 — marking scheme, minor corrections. Appendix listing waterways

Contents

History and Themes	3
Genesis of the Hunt	3
Long-distance Footpaths	3
Horses – including White Horses and Hill Figures	3
Number 13	3
Canals.....	4
Squares.....	4
Poster	4
Jigsaw.....	4
Main Picture.....	4
Messages included on the Poster.....	5
Release date for main Hunt.....	5
Alexander Island, Antarctica	5
NFL Logos	6
Uffington pictures	6
Uffington, Oxfordshire	6
Uffington, Lincolnshire	6
Uffington, Shropshire.....	7
Peripheral pictures: Thirteen thirteens	7
Christmas Card	8
New Year message.....	9
Main Hunt	10
Cyrillic instruction.....	11
Christmas message	11
White horses code	11
Bay horses code.....	14

Postcodes	14
Who Found Ticket 13? code on page 6	16
Letter grid on page 16	17
Outer green numbers	17
Outer white cells	17
Blue square	18
Inner white cells	18
Maps	18
Page background images	19
Einstein tiles with coloured border edges	20
Pictures	20
Position on the page map	20
Perimeter letters in coloured borders	20
Geolocated questions	21
Photos of Locks and Bridges	46
The Start Point	48
Number puzzle on page 12	50
Thirteen Hundred Down	50
CHALK permutations	51
Polybius questions	51
Blue / purple number grid, page 2	53
Blue rectangles: MIST CANDLE Playfair	55
Pink rectangles: Fox Covert message	56
Footpath Perambulation	57
Treasure Location	59
Appendix: List of waterways	61

History and Themes

Genesis of the Hunt

Roger and I had done the 2016 Hunt in somewhat of a rush, putting it together in basically three months. OK, all the building blocks were there, but putting it all into a usable Hunt format was rushed. I wanted to do another Hunt quite quickly as there were other ideas bubbling into my brain.

Long-distance Footpaths

A great interest of mine at the time was long-distance walking. Having moved to the West Country, my wife and I decided to walk the length of the South-West Coast Path – a significant challenge! I joined the Long Distance Walkers Association (LDWA) in order to get more information. I also found the 2017 (Messy) Hunt quite fascinating in laying out the pages and puzzles in a more abstract way rather than the traditional 12 pages of questions and codes.

Once we got to 2020 and the Apopheniacs' spectacular Treasure Island Hunt (based around the Capital Ring footpath), this theme came further to the top of my mind. So, I thought that a circular walk around the UK might be a worthy theme. Such a tour had also been done back in the early days of the Logica Hunt (I think it was 1986) although not graphically.

Horses – including White Horses and Hill Figures

I had put together a racecard for the 2016 Poster and actually quite enjoyed researching it. My sister (who lives nearby) is mad keen on horses and so I had a fount of knowledge for them. My grandmother was a member of a well-known Dorset family (the Horseys), and I had used the Whipsnade White Lion chalk figure as one of the waypoints in the 2016 Beer and Whisky Hunt. So, horses (and, in particular, white horses) seemed to be a theme worth exploring. Linking the various Chalk White Horses with the footpaths also seemed a good idea.

Number 13

2019 was an interesting Hunt. Our team found the treasure just after Christmas and Roger picked up ticket 4. I personally had to visit Buckinghamshire early in the New Year for a do at my old golf club and I had a day to spare after that before heading home to the West Country. So, I decided to head off to the treasure site and see it for myself. I got there mid-morning on Monday 6 Jan 2020. After a lovely (but muddy) stromble through Epping Forest I found the treasure tree. The ticket on the top was ... number 13.

That set my mind on another path altogether. Ideas buzzed around and a code idea also emerged. A new theme? I decided to keep it quiet that I had that ticket. This was confirmed when an email came in from the 2019 Setters on 2 March:

“Marking almost done. Who found ticket 13?”

The mystery for my next quiz was now beautifully set up. My apologies to the 2019 team for causing them some trouble. Now I just had to get the quiz together and get a slot for setting it. That took quite a long time...

I eventually got a slot for the 2024 Hunt – the 39th (a multiple of 13). Perhaps it has become my lucky number (a bit like it has for Taylor Swift). I decided to follow this through to its logical conclusion.

My luck improved in 2023 when I stumbled upon an article in The Times about the discovery of a hat-shaped tile that can cover an infinite plane with patterns that never repeat. Further detail came from a Scientific American article ([Newfound Mathematical 'Einstein' Shape Creates a Never-Repeating Pattern | Scientific American](#)).

Thirteen sides! Thirteen footpaths! Thirteen White horses in Wiltshire! OK some of those are now invisible, but whatever...

Page numbers were given in base 13 **[MISC 01]** and written on the pages in the Jokerman font. Below, they have been converted to decimal. The font just looked nice to me, but a few teams spotted a “13” reference. Bob

Dylan wrote and sang a song called [Jokerman](#). This was originally included on his album *Infidel*, but later turned up as Track 13 on a compilation album called [The Best of Bob Dylan](#) **[Bonus 08]**.

Canals

I attended the drinks and presentation for the 2022 Godstow Witch Hunt in Oxford and an old friend of mine from Logica (Mitch) turned up as well. He asked if he could join in the setting of the 2024 Hunt and I of course agreed. One of his great interests is Canals and Canal Boating, so we decided to add that to the list of Themes. More mapping and drawing for me to do – the possibility of lots of other 13-related questions also came to mind. Bridges and locks are plentiful and included names and numbers. They intersected with paths and provided an excellent background for the pages of the Hunt.

Squares

The submission date for solutions was 13 January 2025. 2025 is a square number, and we featured lots of squares in the Hunt: two 5×5 for decoding, and one 21×21 with 19×19, 15×15 and 13×13 embedded. The yellow grid on page 2 (10×12) was nearly square, as were its cells. We played on this a bit further in the *New Year message*.

Poster

The poster was published as close as we could get to 13:13 on Friday 6 December. The publication process takes a couple of minutes to run, as does sending around 300 emails.

On the website announcement of the Poster being available we added a hint to the use of Base 13 for many (but NOT all!) of the numbers in the Hunt.

In your travails over the coming month or so, remember that sometimes six multiplied by nine could equal 42.

This was a reference to the Hitch-Hiker's Guide to the Galaxy (HHGTTG) which was a theme for the 2014 Hunt. The Question to Life, the Universe and Everything was "What do you get when you multiply six by nine?". The answer is 42 – which shows that there is something fundamentally wrong with the Universe.

However, if you use the numbers in Base-13, the equation works **[Poster 30]**, since $6 \cdot 9 = 54$ in decimal, but $6 \cdot 9 = 42$ in Base-13. Douglas Adams (the author) always denied that he intended this.

Jigsaw

I had originally thought of having the Poster as a jigsaw about 6 years ago. I made several attempts to make a jigsaw, with some success, but the main themes were not fully in place and, frankly, the jigsaw pieces were a bit dull and uniform, albeit double sided with mirror images and text on the back. It was not until the discovery of the einstein tiles in 2023 that the idea came to fruition.

The jigsaw was composed of 13-sided einstein tiles, which tile the plane but only aperiodically, see https://en.wikipedia.org/wiki/Einstein_problem **[Jigsaw 01]**. There was an extra piece: a slightly modified version of the Dulwich Hamlet supporter's bus, see *Peripheral pictures: Thirteen thirteens* below.

Main Picture

With the main themes including walking, long distance footpaths, the number 13 and chalk figures I thought that a reference back to our last Hunt in 2016 would be appropriate. The photo for the background itself was taken by Chris Smith and was lifted from the Chilterns National Landscape website at [The history of Chilterns chalk figures | Chilterns National Landscape](#). It was taken at a point just east of Ivinghoe Beacon, although the kissing gate has changed since then **[Poster 01]**.

Ivinghoe Beacon is great from a couple of perspectives:

- It marks the start of the Icknield Way and the end of the Ridgeway National Trail
- It is a mile or two NE of the ATH 2016 main treasure location.

The view is of the Whipsnade White Lion chalk hill figure **[Poster 02]**, a good theme. It was used as one of the direction points for the 2016 Hunt, the closest one to the Treasure.

I did embellish the Poster somewhat, though. Firstly, there were some additional chalk figures:

- The Long Man of Wilmington in East Sussex **[Poster 03]**. This mysterious guardian of the South Downs has baffled archaeologists and historians for hundreds of years. Fertility symbol? Ancient Warrior? Early 18th Century folly? We may never know.
- Some of the Fovant Badges near Salisbury. These were carved in the chalk by soldiers garrisoned nearby who were waiting to go to France during the First World War. The first was carved in 1916. I included two of them: the Royal Corps of Signals **[Poster 04]** and the London Rifle Brigade **[Poster 05]**. No particular reason, just trying to reinforce the theme of chalk figures. I deliberately did not put any chalk white horses on the Poster¹ so as not to encourage setters down that path too quickly.

Messages included on the Poster

Release date for main Hunt

[The hunt can be walked from early afternoon on Friday 10 December 2.... Enjoy!](#)

The picture overlapping this message is an Ibanez BC9 bi-mode chorus pedal ([Cool Pedal Alert- Ibanez BC-9 Bi-mode Chorus](#)). This was positioned as if obscuring and replacing a year beginning '2...'. BC9 in base 13 becomes 2024 in decimal **[Poster 31]**; 10 in base 13 is 13 in decimal, which makes the release date Friday 13 December 2024 **[Poster 06]**.

The 2 is admittedly slightly out-of-place, but we decided that without it, the fact the BC9 pedal gives the year is a bit too obscure for the poster's teaser puzzles.

Alexander Island, Antarctica

[Using reverse paraglider complexion puts you just three upright poles away from your Christmas entertainment. Enjoy it!](#)

This was originally "After unsettling ports structurally, you'll be little more than 23 yards from your Christmas entertainment. Enjoy it!"; "unsettling ports structurally" was meant to sound like the start of a crossword clue, but it actually refers to the What3Words address [///unsettling.ports.structurally](#) in Antarctica **[Poster 07]**. Five squares SE of it is [///armchair.treasure.hunt](#). As 22 yards equals 4 rods (or poles or perches), converting yards into one of these units gave better options for a surface reading. We toyed with 'downright' instead of SE, but then found [///reverse.paraglider.complexion](#) (including the crossword hook 'reverse') just four squares NE ('upright') from [///armchair.treasure.hunt](#). The centre-to-centre separation of these squares is just under 17m, equating to a little over 3 poles; not only did 'three upright poles' work very nicely in the clue, but it also evoked the [///](#) at the start of the W3W addresses.

Some of you noticed that just north of the Whipsnade Lion is the London Gliding Club at Dunstable Downs and just above it on the ridge is [The Dunstable Hang-gliding & Paragliding Club](#). No bonus points for that – just some kudos **[Bonus 09]**. However, Steve did learn to fly gliders in the 1980s at Dunstable Downs.

Although this clue was developed independently, Steve pointed out that ATH 2020 had also referred to [///armchair.treasure.hunt](#). It's a popular bit of Alexander Island: book early to avoid disappointment.

¹ Well, apart from a very small image of the Uffington White Horse on the Welland Bridge – see later.

NFL Logos

This was a simple monoalphabetic substitution cipher, presented as a warm-up. We did ponder using a more complicated scheme, taking advantage of the nice symmetry of the arrangement of the NFL teams into two conferences each having four divisions, but decided that simple was best.

The lion points at the stone axe route
that all of you would love to chart.
It's clear that questers seeking loot
must first walk on to find the start. **[Poster 08]**

The message points to the Icknield Way, which is symbolised by a stone axe **[Poster 29]**. 'Walk on' is what bargees might have said to their horses.

I had intended to put a stone axe symbol on to the left of the Poster where the Lion was looking but was persuaded that this was too much of a clue.

The letters A to Z were assigned to the first 26 of the 32 NFL franchises, arranged in order of foundation date **[Poster 09]**. There is some uncertainty over the dates: <https://operations.nfl.com/learn-the-game/nfl-basics/team-histories/> should be authoritative but is internally inconsistent, so we also consulted Wikipedia to come up with a rough order. Franchises from the same year were ordered alphabetically. The draft message was amended to use a Q (although not B J or Z), so that the thematic white horse logo of the Denver Broncos was included; and a G, to preclude the possible decipherment 'stone age'. Stone axe was what we wanted.

Solving the cipher doesn't rely on understanding the ordering, and in fact the precise order doesn't really matter — with one exception. Solvers who did deduce the reason were given a good nudge towards solving the Polybius question 'sunny city that the oldest pro footballers call home', which we regarded as a bit tough without this hint. Mindless use of an online monoalphabetic substitution solver would not have provided this insight. Other possible applications of the NFL teams, e.g. for the *Blue / purple number grid, page 2* or to the Colston dolphins (see *Outer white cells*) were not intended.

Uffington pictures

There are three Uffington villages in England and I visited two of them in researching the Hunt – Oxon and Shropshire (I'll be going to the Lincolnshire one in April). The footpaths trail we created goes through or near all of them, so they are thematic.

Uffington, Oxfordshire

The Uffington White Horse is probably the most famous of the English White Horses and has been the subject of many books and films over the years. I of course wanted to include reference to it in this Hunt. I never intended to hide the treasure near it, so it was always intended to be a red herring (or should that be a white herring?). It is thousands of years old and is currently maintained by the National Trust. I vaguely wanted to include the NT's brilliant 2017 April Fool's Day joke about the Uffington White Duck – see [\(20+\) Video | Facebook](#), or even the Cheltenham Races 2012 joke about the horse getting a rider, see [Ancient White Horse acquires a jockey ahead of Cheltenham - Horse & Hound](#). But too much information, not enough space.

I knew I would be using Uffington quite a lot on the Hunt, so took several pictures on my tours of the village **[Poster 10]**. The one I used on the Poster (top centre) was a lovely hand painted picture on the gate of South Cottage on the High Street **[Poster 10.1]**. I did of course blank out the word Uffington on the Poster.

Uffington, Lincolnshire

At the bottom left of the Poster was a photo of Uffington Bridge, near the village of Uffington in Lincs **[Poster 11]**. I decided to put this into an einstein tile on a bit of a whim. This is the bridge over the River Welland and also very close to the disused Stamford Canal, just south of the village. The scarecrow poster is from the Uffington Primary School – see [Uffington Church Of England Primary School - Preparing for the big weekend!](#).

As stated above, I did sneak in a very small picture of the Uffington White horse on the Bridge picture – a few of you spotted it.... **[Bonus 11]**.

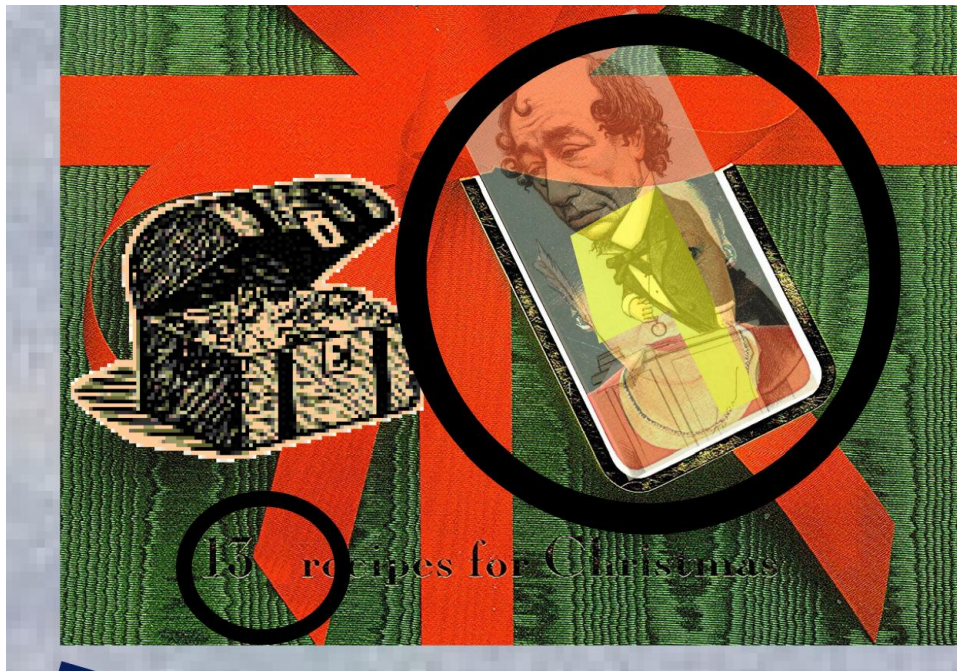


Uffington, Shropshire

The third Uffington is in Shropshire, just outside Shrewsbury and is at the junction of the Shropshire Way and the Great English Walk. The disused Shrewsbury Canal runs directly through the village and several of the cottages pictured are old Canal-related buildings (e.g. Canal Cottage which I included in some text) **[Poster 12]**. When I saw the horse being led down the pavement outside the Old Post Office, I simply had to take a picture!

Peripheral pictures: Thirteen thirteens

- P13 missing from the Dulwich Hamlet supporters' scarf, on the bus to Dulwich library **[Poster 13]**
- Egeria 13 Asteroid **[Poster 14]**
- R13 Rebellion racing car **[Poster 15]**
- ASK-13 Schleicher glider **[Poster 16]**
- M, as played by Judi Dench in *No Time to Die* — the 13th letter of alphabet **[Poster 17]**
- Beaconsfield, treasure location for the 13th ATH in 1998 **[Poster 18]**. The theme was food, and the front cover was based on the book *Delia Smith's Christmas*. Superimposed on the book cover are Benjamin Disraeli (1st Earl of Beaconsfield) and the ATH treasure chest, pointing to Beaconsfield.
- I also sneaked in two other little posers on this image of the book cover:
 - There was a hidden Logica "L" logo under the picture of Disraeli as per the ATH first page and
 - I removed the 0 from the "130" to make it "13 Recipes for Christmas" **[Bonus 13]**.



- Ultravox's *Dancing with Tears in My Eyes*, the 13th Ultravox single to chart in the UK from the album *Lament*; also performed at Live Aid on 13 July 1985 [Poster 19]. Lots of songs were performed on that day, so no bonuses for spotting that, but we did award a bonus for spotting that "Dancing .." was the 13th song played that day [Bonus 03]. The single was released in 1984, so several of you speculated that this was a reference to George Orwell's novel of the same name – the first line of that novel is "It was a bright cold day in April, and the clocks were striking thirteen". Pure coincidence – we hadn't spotted that ourselves, so no bonus points, just some recognition [Bonus 06]! Similarly, some people conjectured that the *Lament* album had on its cover the Callanish Stone circle which consists of 13 stones. Interesting and worthy of respect, but no Bonus points for this [Bonus 12].
- L13 is the postcode for the Old Swan in Liverpool, pictured [Poster 20]
- Alton Towers, home to the TH13TEEN rollercoaster [Poster 21], which was temporarily renamed FOU13TEEN (as shown in the photo) on Friday 13 August 2010, for that one day only [Poster 22].
- T-13 tank destroyer [Poster 23]
- I-13, the designation originally proposed in 1957 for Interstate 605 in California [Poster 24]
- O-13, an early US submarine [Poster 25]
- New York Yacht Club's burgee. They were the winners in 1903 of the 13th Americas Cup [Poster 26]

These give the acrostic **PERAMBULATION**, starting (middle, south-ish) roughly where the footpath trail in the Hunt proper begins and proceeding anti-clockwise [Poster 27]. The jigsaw contained one extra piece: a slightly modified version of the P13 bus. This indicated the importance of the bus as the place to start reading PERAMBULATION [Poster 28].

Christmas Card

The Christmas Card, published just after 13:13 on Christmas Day, provides a good-quality copy of the completed poster jigsaw. It also provides some hints for the main hunt:

We got this jigsaw for Christmas and are proud to share the completed picture with you. Curiously, there was an extra piece. It must indicate something. And those funny symbols in the border seem to be telling us something important, but we can't work out what.

Whatever, no more jigsaws for us this Christmas!

The last line of this message was added to dissuade teams from time-consuming but futile attempts to construct a jigsaw from the einstein tiles in the main Hunt.

The extra piece is one of the two P13 bus pieces from the poster. On the Christmas Card it's shown as the one with the question marks on the face of the driver (Wayne Keeble). As explained above, it's the start of the word PERAMBULATION on the poster. The piece is shown with a new coloured 'einstein' border with some letters. The grey segment that maps to the Ridgeway bears the letters OBAQ, which decodes to BOND under the ROT-13 cipher that is applied to the tile borders (see *Einstein tiles with coloured border edges*). The remaining letters, after applying ROT-13, give the W3W address *///rumbles.binds.readings*. This is where the Ridgeway path crosses just in front of the first tee at Huntercombe golf course and is **the start of the 1300-mile 'widdershins' perambulation on the main footpath network**.

The Wayne Keeble tile is shown superposed on Tenniel's illustration of Alice climbing through the looking glass (which, on the reverse of the page, shows her emerging on the other side). This is a pointer to the special double-sided pair of tiles: Tara King at Start Point lighthouse from the Avengers episode *It's all done with mirrors*, and the James Bond / Goldfinger question to which the answer is Huntercombe. It's re-emphasising that climbing through the page from the mirrored Start Point tile leads to the start point for the main Hunt, i.e. Huntercombe (an appropriate name!).

The picture of the Uffington bridge and the scarecrow, which is the only picture within the poster that comes out in the shape of an einstein tile when extracted from the PDF, is also shown, mirrored from its original.

The comment about the NFL logos cipher is to emphasise the importance of locating the start of the walk ("It's clear that questers seeking loot, must first walk on to find the start.")

PS If you're planning on using a pub over the holidays, please make sure that it's open! — some teams were misidentifying Bay Horse pubs (see Bay horses code), choosing pubs that had closed and hence would give the wrong letters when the indicated letter was extracted from the name of the location.

There is no sign-off. Instead, the card reproduces the Christmas message from the main Hunt (an easy Polybius cipher), but this time the red numbers have been given a yellow background. The card also shows the start of the set of 'non-einstein' questions (see *Polybius questions*), now with a yellow background. This hints that the non-einstein questions form a Polybius cipher. The yellow background is also significant because it matches the background for the well-concealed third Polybius cipher in the Hunt (see *Blue / purple number grid, page 2*).

New Year message

On 1 January we posted the following:

	±	±	±	±	±	±	±	±	±	
±	As we enter 2025, the first									±
±	square year in the lifetime of									±
±	any of the setters, we'd like to									±
±	celebrate by sharing some									±
±	squarish doodling that we									±
±	found in our files.									±
±	Happy New Year!									±
±	±	±	±	±	±	±	±	±	±	

27 22	29 15	4 8	23 20	23 30	13 13	16 31	31 17	15 15	27 12
8 8	18 30	21 16	16 4	15 15	2 29	16 31	31 4	24 23	13 8
5 11	1 1	11 22	9 20	1 31	23 6	30 19	16 14	29 28	25 30
10 31	11 8	16 8	30 11	1 26	4 31	28 21	2 23	10 31	2 25
29 28	11 1	26 27	27 27	7 30	9 31	30 7	16 21	26 27	14 1
2 16	7 19	4 30	2 26	11 23	13 14	30 15	17 15	7 21	23 31
4 31	21 31	8 1	30 25	23 30	25 4	16 7	6 31	23 21	7 29
20 8	15 9	25 29	28 18	16 15	2 20	29 17	8 31	18 24	24 27
22 31	1 1	29 11	30 11	4 29	19 29	22 8	7 31	10 11	10 29
19 13	29 22	4 4	13 13	4 23	6 11	8 31	1 1	4 29	15 15
22 15	27 27	12 21	16 31	12 20	30 17	4 31	2 31	16 15	31 27
29 18	5 30	12 17	24 26	29 23	20 25	25 30	30 10	29 7	8 31

16 30	16 16	5 29	16 14	24 16	12 12	23 32	32 10	24 16	16 14
3 2	26 16	20 31	19 11	16 16	17 16	11 32	32 3	10 24	27 2
10 27	3 31	30 18	25 6	31 32	16 14	24 8	31 20	16 12	28 16
6 32	30 23	3 11	24 8	19 27	5 32	27 8	19 16	14 32	23 18
16 12	30 7	30 16	24 16	18 24	22 32	24 18	7 27	20 16	8 7
3 31	12 20	17 16	19 12	20 16	27 12	16 16	10 16	27 12	24 32
5 32	27 32	13 31	24 28	16 24	30 3	31 28	6 32	24 20	8 16
15 7	24 22	20 16	8 9	7 16	23 6	24 26	23 32	9 21	25 24
20 32	11 19	24 18	24 18	11 24	12 24	28 13	20 32	15 8	6 24
28 12	24 30	11 19	20 30	13 16	6 28	31 32	19 3	2 16	24 16
27 16	16 16	26 30	3 32	22 14	16 6	17 32	23 32	7 24	32 16
24 22	15 24	21 21	21 8	16 16	14 28	18 16	16 22	16 18	19 32

The green border matches that of the 21×21 grid on p16. The ± symbols provide a clue on how to decode it. By 1 January, a few of the teams that we were following had realised how to decode the two outer rings of white cells, but only one or two had realised how to decode the central 13×13 square. As the messages in the internal square point to the large perambulation, which we hadn't observed any teams understanding, an extra hint was in order.

The yellow rectangles provide 'blue-only' and 'purple-only' versions of the message on page 2 (see *Blue / purple number grid, page 2*). We hadn't seen anyone make any real progress with this and hoped that providing both versions would give a clue as to what was going on. Sean B, our test solver, had found it very difficult — even with some hints — to decipher either code when each gave only isolated fragments of the message. We intended that the blue cells from the combined message were reproduced in the blue-only version; the purple cells ditto. Replacing the purple 18 12 in the third row with 30 18 was unintentional, but did reveal that there was more than one possible encoding of (in this case) the pair 3 3.

The title of the PDF includes the (revealing) name of the Word document from which it was created, namely Polybius_5.2.docx. This was inadvertent but actually provides some nice further guidance: "how do you get a 5×5 square out of these numbers?"

In passing, we note that not only is 2025 square, it's the sum of two squares (36^2+27^2), three squares ($40^2+20^2+5^2$), four squares (e.g. $32^2+24^2+20^2+5^2$), five squares (e.g. $34^2+24^2+16^2+6^2+1^2$) and six squares ($32^2+24^2+16^2+12^2+4^2+3^2$); the product of two squares ($9^2 \times 5^2$) and three squares ($5^2 \times 3^2 \times 3^2$); and the sum of the first nine cubes ($9^3+8^3+7^3+6^3+5^3+4^3+3^3+2^3+1^3$). And, deduced from a Fermat near-miss discovered in 1995, it equals $1305609249^3+13143477^3+(-1305609693)^3$ (i.e. it's the sum of three cubes, one of them negative). However, we awarded no bonus points for spotting these and further elaborations of the mathematical properties of the number 2025 **[Bonus 14]**.

Main Hunt

The main Hunt was published a couple of minutes after our target of 13:13 on Friday 13 December, after some last-minute updates to cope with the full PDF being too large to be uploaded to the website.

Cyrillic instruction

Page 1 bears an inscription, written in lower-case (Russian) Cyrillic, and using only those letters that could plausibly look like Latin (English) text to provide a little misdirection:

итсиинпортанит2нривит2саидедтурноинпортрактегсаид4портр8оронишортсаид4онноzum

Reading phonetically, taking 2, 4 and 8 as 'to', 'for' and 'ait' when necessary, this produces the message

It's important to print two-sided. Turn on protracted [=long] side for portrait or on short side for opposite.

Doing so puts the canal tiles (locks and bridges, each with a number) on the reverse of the 'question' tiles to which they relate **[Code 01]**.

It's perhaps helpful to answer a few questions about the transliteration which non-Russian speakers might have after using Google and seeing how Russian letters are described:

- *m* is the lower-case cursive version of the Russian letter normally rendered in print as т (pronounced as English t)
- The *л* is a lower-case cursive version of the Russian equivalent to the English d. There is another lower-case cursive form, written very like the English d (*д*), and the letter also often appears in print as a lower-case version of the capital - Д
- *caug* (**caug**) really sounds like "sigh-yeed" as Russian only forms diphthongs by using the letter й. The spelling **caйг** would render "side" very well, but would give away immediately which language was in use, so we decided to cheat just slightly by omitting the diacritic mark.

Christmas message

The red numbers on p1 identify letters in simple 5×5 'Polybius' square (combining I and J in a single cell), as used in the basic Polybius cipher or tap code (and also for Playfair, in the absence of a keyword). The message is

MERRY CHRISTMAS AND VERY HAPPY NEW YEAR ATHING FROM STEVE ROGER MITCH AND SEAN

This appears to be just the traditional Christmas greeting, but in fact it's confirming the method and the grid to be used for a couple of tougher problems; see later **[Code 02]**.

White horses code

The white horse images on pages 1 to 15 (decimal) are geolocated at actual White Horse pubs. They are all outlines of white horses cut into or painted onto hillsides. The locations of the pubs are not important (although the horses are all accurately placed, and the pubs were still open when the Hunt was being compiled), but the number of them on a given page indicates the letter to be taken from the name of the horse that is outlined.

Page (base 10)	Horse	No. of horses	Letter
1	Osmington	6	G
2	Alton Barnes	4	O
3	Uffington	2	F
4	Folkestone	8	O
5	Juarez, Mexico	4	RO
6	Broad Town	2	R
7	Kilburn	2	I
8	Litlington	7	G
9	Cherhill	5	H

Page (base 10)	Horse	No. of horses	Letter
10	Westbury	4	T
11	Hackpen	1	H
12	Marlborough	8	O
13	Mormond Hill	3	R
14	Pewsey	4	S
15	Devizes	6	E

The Caballo Blanco de Juárez is a reversed image of the Uffington white horse, painted in whitewash and enlarged from about 110m long to 960m!

We awarded points for identifying each of the horse images ([WH icon-01] to [WH icon-15]).

The letters above spell out

GO FOR RIGHT HORSE [Code 03]

For full information as to which pubs were actually mapped, see the table below.

Page No.	Pub Name	Pub Address	W3W Link
1	White Horse Tavern	33 Southgate, Halifax, Calderdale	desire.round.save
1	The White Horse Inn	Scholes Road, Jackson Bridge, Holmfirth	dreading.united.earmarked
1	The White Horse	30 Main Street, Ledston, Castleford	skirt.help.indicates
1	White Horse	384 Worsley Road, Swinton	post.dame.decreased
1	The White Horse	18 Hall Street, Tottington, Greater Manchester	swung.tiles.hungry
1	White Horse	61 North Street, Ripon, North Yorkshire	pity.polices.cooked
2	The White Horse Inn	30 High Street, Bempton, Bridlington	cargo.digs.swooning
2	The White Horse Inn	Hengate, Beverley, East Riding Of Yorkshire	gasping.dynasties.crackles
2	The White Horse	51 Main Street, Hutton Cranswick, Driffield	usual.plunge.utensil
2	White Horse Inn	Main Road, Gilberdyke, Brough	ventures.riverbed.vitals
3	White Horse	4 Finger Road, Dawley, Telford, Shropshire	harmonica.fallback.laugh
3	White Horse Tavern	New Road, Wrockwardine Wood, Telford, Shropshire	parked.tailing.mopped
4	The White Horse	70 London End, Beaconsfield, Buckinghamshire	surely.defend.study
4	The White Horse	London Road, Bourne End, Hemel Hempstead	goes.grid.stir
4	The White Horse	9 Kidmore End Road, Emmer Green, Reading	post.dame.decreased
4	White Horse Inn	Daventry Road, Norton, West Northamptonshire	scooters.rebounder.dunes
4	The White Horse	52 Broad Street, Oxford, Oxfordshire	scary.robot.evenly
4	The White Horse	The White Horse, 1 Stocks Hill, Silverstone	airship.emotional.these
4	The White Horse	49 High Street, Stony Stratford, Milton Keynes	waltzed.gown.dished
4	The White Horse	Easthampstead Road, Wokingham Without, Wokingham	courier.driven.others
5	The White Horse Inn	Bristol Road, Hambrook, South Gloucestershire	powers.arrow.dices
5	White Horse Inn	Cabbage Lane, South Cheriton, Horsington Templecombe	twinkled.taxpayers.saloons
5	White Horse Inn	Main Street, Litton Cheney, Dorset	followers.spurring.lemons
5	White Horse Inn	The White Horse Inn, The Wall, Mark	frizz.denim.educated
6	The White Horse Inn	Pulverbatch, Shrewsbury, Shropshire	octagon.frock.digit
6	White Horse Inn	Wenlock Road, Shrewsbury, Shropshire	seated.shows.star
7	White Horse Inn	Compton Bassett, Calne, Wiltshire	unfit.avoid.prop

7	White Horse Inn	Lower Road, Quidhampton, Salisbury, Wilts	polo.debater.seducing
8	The White Horse	Sea Dyke Way, Marshchapel Grimsby	shot.after.strictest
8	The White Horse	2 Leicester Road, Quorn	library.aliens.recording
8	White Horse Inn	29 Silver Street, Gainsborough	sped.giggles.chum
8	The White Horse	White Horse Inn, 24 Kenwick Road, Louth	frostbite.deform.sprays
8	The White Horse Inn	60 Church Street, Ruddington, Notts	parts.acted.flows
8	The White Horse Inn	6 Church Street, Seagrave	store.dolphin.wasps
8	The White Horse	45A Boston Road, Sleaford	wasp.defend.fleet
9	The White Horse	2 The Square, Kings Sutton	friday.cyclones.hired
9	The White Horse Hotel	Church Row, Pershore, Worcestershire	scratches.bullion.ranking
9	The White Horse Inn	Gloucester Road, Buckover, South Gloucestershire	goat.suitable.costly
9	Vale of the White Horse	Lakeside House, Vale Of The White Horse Inn, Station Road, Minety	certainty.pothole.apartment
9	The White Horse	High Street, Mitcheldean, Gloucestershire	poetic.birthing.intervene
10	Old White Horse	South Road, Norton, Stourbridge	woods.inch.dome
10	White Horse Inn	16B New Street, Quarry Bank, Brierley Hill	chips.hogs.slows
10	The White Horse	The White Horse, 2 York Street, Birmingham	tell.healers.chair
10	The White Horse	Kingsbury Road, Curdworth, Warwickshire	olive.liked.taped
11	White Horse Inn	73 High Street, Loftus	viewer.appendix.lightbulb
12	The White Horse	243 High Street, Arlesey, Beds	outdoor.passwords.messed
12	White Horse	118 High Street, Barton, Cambridgeshire	abode.backup.actor
12	The White Horse	84 Newnham Avenue, Bedford	shin.entire.modest
12	The White Horse Inn	23 Church Street, Exning, Suffolk	solar.sketches.glossed
12	The White Horse	45 High Street, Foxton, Cambridgeshire	breakfast.gilding.vibrating
12	White Horse Inn	20 - 22 High Street, Milton, Cambridgeshire	frosted.drunk.gates
12	The White Horse Inn	1 Market Street, Swavesey, Cambridgeshire	pages.tributes.hardback
12	The White Horse Inn	Bradmans, Hollow Hill, Withersfield, Suffolk	stones.deodorant.asteroid
13	The White Horse	Newbury Road, Hermitage, Thatcham, West Berkshire	tarnished.prospers.tuned
13	The White Horse	189 Ock Street, Abingdon, Oxon	folds.sleepy.conspire
13	The White Horse	Woolstone, Faringdon, Oxon	tropic.salsa.waltzes
14	The White Horse Inn	The Street, South Lopham, Norfolk	clasping.inflating.committed
14	White Horse	27 Church Street, Market Deeping, Lincolnshire	president.mattress.prevents
14	The White Horse	4 Church Street, Baston, Lincolnshire	cured.hacking.balloons
14	The White Horse	2 Main Street, Empingham, Oakham	overdone.market.tango
15	White Horse	White Horse Public House, 25 Morledge, Derby	port.healthier.newest
15	White Horse Hotel	White Horse Hotel, 18 Buxton Old Road, Disley	alike.utensil.rides
15	White Horse	575 Liverpool Road, Irlam	perfected.envoy.copying
15	The White Horse Inn	White Horse, 22 Pillory Street, Nantwich	rally.spans.outsmart
15	White Horse	Brownhills Road, Tunstall, Stoke-on-Trent	bring.radio.minus
15	The White Horse	Badger Lane, Woolley Moor, Alfreton	guru.poorly.chat

We awarded a single bonus point for each of these pubs that were identified ([WH01] to [WH66]).

Bay horses code

It was with a little bit of dismay that I found that the background area for the Wainwright Coast to Coast footpath on the page contained NO White Horse pubs. That scuppered the intention to have the White Horse code on all 16 pages. However, it did give us the opportunity to have a second code using the pub locations as the Bay Horse seems to be a very popular pub name in this northern part of the country.

The bay racehorses themselves are geolocated at actual Bay Horse pubs. I took the basis of the bay horse image from the Frank Paton painting of 1888 in Liverpool Museum- [Bay Horse in Field | National Museums Liverpool](#). I then superimposed a jockey with different coloured racing silks and an appropriate number.

Each bears a number, and a rider with coloured silks. The number indicates which letter to take from the town or village where the pub is located. The silk colours indicate the order of those letters to be used **[Code 04a]**, according to the resistor colour code: brown = 1, red = 2, orange = 3, yellow = 4, green = 5 **[Code 04b]**.

The pubs are as follows:

Page (decimal)	Bay Horse Pub	Colour Code and letter in Pub	Letter
1	Chapelthorpe	Brown 7	T
1	Rochdale	Red 6	A
1	York	Orange 3	R
1	Haughton Green	Yellow 2	A
2	Market Weighton	Brown 9	I
2	Stamford Bridge	Red 1	S
8	Winteringham	Brown 11	A
8	North Somercote	Red 4	T
13	Masham	Brown 3	S
13	Rainton	Red 5	T
13	Ravensworth	Orange 2	A
13	Hurworth	Yellow 6	R
13	Catterick Village	Green 4	T

We awarded a single bonus point for each of these pubs that were identified (**[BH01]** to **[BH13]**).

This produces the message:

TARA IS AT START

This points to question 453, Tara King at Start Point lighthouse and thus provided another clue to find the start point of the perambulation **[Code 04]**.

Postcodes

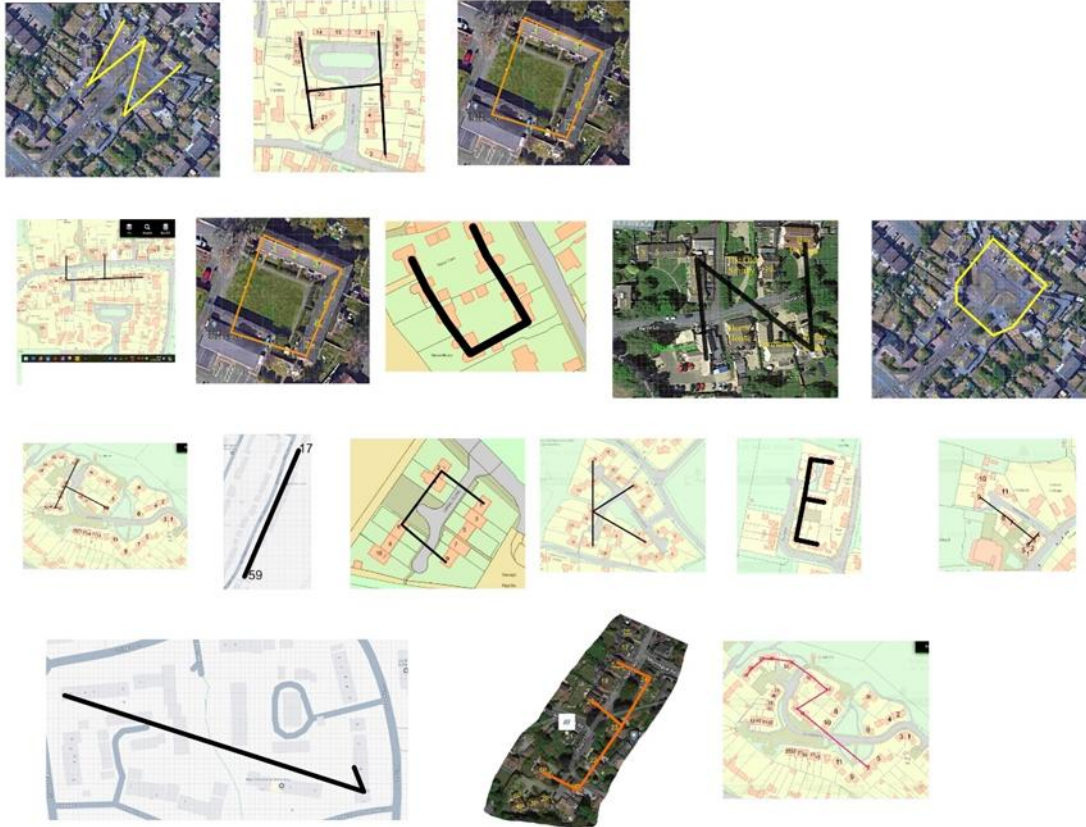
We needed a hint to help Solvers decode the Ticket 13 Code (see below). An idea was inspired by a cyclist who cycled a route around Shoreham-by-Sea to thank the NHS for their efforts during the Covid lockdown in 2020. This route spelt out “NHS” when traced onto a map of the area and is shown at: [Cyclist spells out NHS to thank key workers | County Times](#).

My original thoughts were to draw the letters with end points that were all W3W locations across the map of England, with at least one of the W3W locations being the site of an ATH treasure for one of the years that Ticket 13 was found. However, this would have needed a LOT of work to get sufficient W3W codes to be put in place (over 100) and there were not enough finders to be able to do this economically. Also, it probably gave too much of a clue as to how to solve the associated Ticket 13 code. So, in late 2020 I was delighted to find an alternative to this – postcodes and house names and numbers inside those postcodes. **[Code 05a]**

I tried to make the locations of the postcodes all fit the theme of Uffington, although I had to make a few allowances for the (slight) lack of suitable locations. Some allowance for rotation of the letters was made, again to suit the locations available – this did cause a little bit of confusion for some solvers (particularly mistaking the “3” for an upside down “E”. Most of you worked it out properly, though.

The actual code is as follows:

Page (decimal)	Postcode and Location	Buildings	Letter
1	RG31 5LY Uffington Close, Tilehurst, Reading. Interesting in that no. 13 does not exist!	House numbers 21, 9, 25, 10, 20	W
2	SN7 7RZ Hill View, Uffington, Oxon	House numbers 15, 22, 19, 6, 1, 11	H
3	LN6 0AE Uffington Close, Lincoln (not Uffington Avenue across the road at LN6 0AG)	House numbers 1, 2, 3, 4, 5, 6, 7 and the Evangelical Church on the south side of the Close.	O
4	SN7 7RA Broad Street, Uffington, Oxon	St Mary’s Church, Buena Vista House, the White Horse Pub, Buena Vista House, No. 11, the Laurels House.	F
5	LN6 0AE Uffington Close, Lincoln	As per page 3	O
6	SY4 4SG Manor Farm, Uffington, Shropshire	House numbers 2, 1, 6, 5, 8, 7, 4, 3	U
7	PE9 4SZ Bertie Lane, Uffington, Lincs	The Bertie Arms pub, No. 9, Poplar House, Bay Cottage	N
8	RG31 5LY Uffington Close, Tilehurst, Reading	House numbers 20, 12, 10, 9, 11, 21, 20	D
9	SN7 7GN Jacksmeadow, Uffington, Oxon	House numbers 10, 36, 30, 36, 44	T
10	LN6 0AG Uffington Avenue, Lincoln	House numbers 17, 59	I
11	SY4 4TR Canal Close, Uffington, Shropshire	House numbers 1, 2, 6, 9	C
12	SN7 7RN Craven Common, Uffington, Oxon	House numbers 18, 11, 15, 22, 15, 6	K
13	OX12 9QN Hill View, Kingston Lisle, Oxon Not an Uffington, but half a mile down the road from one	House numbers 11, 12, 5, 7, 5, 3, 1	E
14	SN7 7RR Waylands, Uffington, Oxon	House numbers 9, 8, 7, 3, 4, 3, 6	T
15	RG12 9HR Uffington Drive, Bracknell	House numbers 2, 60, 56	1
16	HP4 3DX North Road, Berkhamsted. Not quite theme related, although house no. 18 (now called Cameron House on StreetView) is described by HM Land Registry as “Uffington” [BONUS 02].	House numbers 18 (Uffington), 24, 23, 20, 23, 1 the Pines, 6 the Pines	3
12	SN7 7GN Jacksmeadow, Uffington, Oxon	House numbers 22, 24, 26, 28, 30, 16, 18, 14, 7. This spelt out a question mark, with its final dot (a little ATH treasure chest symbol) on the ATH 2019 treasure location in Epping Forest.	?



The final message is:

WHO FOUND TICKET 13? [Code 05b]

On page C I added included a 'vector' question mark, drawn in the same manner as the letters above and with the 'dot' (consisting of the ATH treasure chest) at the 2019 Hunt location **[Code 06]**.

Who Found Ticket 13? code on page 6

This leads to the solution of the code on Page 6. This is based upon the team name of the finders of Ticket number 13 for each of the Pablo's ATH Hunts in the relevant year. Not all years had such a find, however, but as noted in the Introduction, I found the Ticket in 2019, but did not let on as I wanted to use this code and the mystery for my next Hunt.

The code itself is simple – take the year of the Hunt in which Ticket 13 was found and then the number after the dot is the offset into the Team name, *including spaces*. For the 2014 finders (PDG Smith et al) there has been a longstanding typo in their name for that year, i.e. missing out the space between PDG and Smith. I have wanted to correct it for years, but doing so would have brought attention to it and would make the code easier to solve. So, in the end, I did not. It took a bit of coding, and I explored three variations: (a) Full year, i.e. 1985.1 for A (too easy), (b) Sequential ordering of the Hunt, i.e. 1.1 for A, or (c) two-digit year, which is what I used in the end.

The decoded message is as follows:

From the horses tail walk through the car park over a low stile and into the plantation. Follow the path through to the yolk stile at the far end. Play on the swings if you like on the way. You are now within a furlong of the treasure. [Code 07]

Now, I may have left too much information in here; seasoned Hunters used it to bypass a lot of the other codes in the Hunt and take a (successful) early punt on finding the treasure. Plantation and yolk were the two key words here; 'plantation' pointing strongly to the treasure location of Leipzig Plantation, **[Code 08]** as none of the

other Wiltshire white horses is very close to a suitable Plantation. However, well done to the teams who used this!

Letter grid on page 16

The grid has 21×21 lettered cells, and 80 digits 1–5 around the perimeter of the square.

Outer green numbers

This code was inspired by a 2023 Listener crossword puzzle and so became known among the setters as the Listener code. (Our thanks to Cagey, the crossword composer in question.)

The message begins with the 3 at the top left corner (as indicated by the finger) and uses the triplets attached to the questions with tiled pictures, taking, in normal ATH fashion, the first letter of each answer.

A circuit of the block, starting with 312, produces the message:

Drop anchor at the nearest horse [Code 09a]

which is a coherent enough message, but not complete. Solvers should continue (the above message having already reused the initial 3, so that 123 is the next letter) to complete three circuits, giving:

Drop anchor at the nearest horse to the beginning of the end and now follow his new thematic trail [Code 09b]

To decipher this – the Beginning of the End is defined in the Rebus on Page 12 and also by the other codes in the Hunt. The nearest White Horse to the B of E (which is Thirteen Hundred Down) is the Westbury White Horse, which is in widespread use on the packaging of Anchor butter [Code 10]. At that point, the White Horse Trail splits off from the previous Hunt trail, the Wessex Ridgeway. So the White Horse Trail is the next Thematic Trail, and you proceed **clockwise**.

The Wessex Ridgeway does not go over Thirteen Hundred Down as it is inside the MoD ranges of Salisbury Plain and inaccessible to the general public.



Outer white cells

The borders of the 19×19 and 17×17 squares contain separate messages. They are read clockwise, like the green numbers. They were encoded by adding (alphabetically) the plaintext letter to the four peripheral green numbers: top and bottom of the relevant column, and left and right of the relevant row. Given the numbers that actually appear on the perimeter, this shifts the usual English letter frequency rightwards by about 10 letters and smears it out. Subtracting off the relevant numbers produces two questions:

John required fifteen pounds to ascend which incline in the early nineteenth century? [Code 11]

The statue was dumped into the harbour. What adorned the corners of its plinth? [Code 12]

The first question refers to the 15 side pounds that John Rennie needed for the 16 locks in the Caen Hill flight, completed in 1810. The second refers to Edward Colston, Bristol merchant (slave trader) and philanthropist, whose descendants lived for some time at Roundway Park, just north of Devizes. Colston adopted the dolphin as his emblem; the gate at the south end of Quakers' Walk, which leads to the treasure and borders the old Roundway Park estate, features this emblem.

In hindsight, we should have used the answers CAENHILL and DOLPHINS in some way to encipher the message in the inner white cells. But we already had a scheme in mind for that.

Blue square

The letters in the blue square are read anti-clockwise. Taking every third letter and completing three circuits results in the message

BEGINNING OF THE END IS THEMATIC C MILES ANTICLOCKWISE AFTER START [Code 13]

'Thematic C' is 1300.

Inner white cells

This square has the thematic dimensions of 13×13. The cipher used here combines the ideas used for the blue cells and the outer white cells. The ciphertext was generated by taking the plaintext, adding the numbers in the corresponding top and right green cells ('plus x' and 'plus y' on a Cartesian grid), and subtracting the numbers in the bottom and left green cells ('minus x' and 'minus y'). Deciphering of course requires the opposite operations. The message is placed in every seventh cell (7 is the smallest number that is co-prime to the length of each of the six circuits), reading anti-clockwise. This yields the following text, ring by ring (and each requiring seven circuits):

ROUNDANDROUNDANDROUNDHEGOESWHERE TOSTOPNOONEKNOWS

FOLLOWTHEMAPPEDPATHSEGMENTSTO BUILDACHAIN

LOOKTOSTARTPOINTFORTHESTARTPOINT

TRAVELTHECORRECTDISTANCE

ToreachBEGINNING

OFtheEND

X

[Code 14]

The first line of this message is a modified version of the ditty associated with the 'Wheel of Fortune', amended to fit into 48 characters, and alludes to the ring of long-distance footpaths. The second line describes how solvers must construct the loop; the third indicates where to start ('through the looking glass' from the Start Point Lighthouse einstein tile, i.e. at Huntercombe); lines 4, 5 and 6 reinforce the instructions to travel 1300 miles from the start point to reach the 'Beginning of the End'. The final X could be interpreted as just a cryptographic filler, but it is more pleasingly regarded as a sign-off kiss or even a treasure-related 'X marks the spot'.

Maps

Each map shows a section of a long-distance path of a distinct colour [PATH-01], and the network of waterways (canals and rivers, including navigable, non-navigable and disused) around it.

To give some idea of the scale, particularly for the rather short Silkin Way, we provided scale bars. These had lengths of 10km, 50km or 100km, or 6.21371, 31.06856 or 62.13712 miles. Conversion into base 13 (with 13ths, 169ths etc following the point) gives 6.2A16A, 25.0B782 and 4A.1A234. The colour(s) of the scale bar matches the colour(s) used for the paths on the page [PATH-02].

The various colours on these maps were as follows:

Einstein face	Path Name	Canal Colours	Colour	R	G	B
1	Icknield [PATH-03]		Red	255	25	40
2	Peddars [PATH-04]		Mint	170	255	195
3	Hereward [PATH-05]		Yellow	255	225	25

4	Viking [PATH-06]		Blue	0	130	200
5	Yorks Wolds [PATH-07]		Orange	245	130	48
6	Cleveland [PATH-08]		Cyan	70	240	240
7	Wainwright Coast to Coast C2C [PATH-09]		Magenta	240	50	230
8	Great English Walk [PATH-10]		Teal	0	128	128
9	Shropshire [PATH-11]		Lavender	220	190	255
10	Silkin [PATH-12]		Brown	170	110	40
11	Monarchs Way [PATH-13]		Green	60	180	75
12	Wessex Ridgeway [PATH-14]		Pink	250	190	212
13	Ridgeway [PATH-15]		Grey	128	128	128
		Disused [CANAL-01]	Purple	145	30	180
		Non-navigable [CANAL-02]	Maroon	128	0	0
		Navigable [CANAL-03]	Navy	0	0	128

Page background images

The background images on each page provide a clue to the name of the relevant long-distance path.

Publication Order	Path Name	Background Picture
1	Great English Walk - North	GEWurtztramiNer wine from Alsace (with the GEW and N edited out of the photo). [PAGE-01]
2	Yorkshire Wolds Way	Huggate Wolds Inn - picture of the outside of it with its Quail logo superimposed. [PAGE-02]
3	Silkin Way	The Ramblers Association book cover from the Open Spaces Society 70th anniversary of the 6 December 1949 Access to the Countryside Act 1949, announced by Lewis Silkin using the additional words on the book cover. [PAGE-03]
4	Ridgeway NT East	The Fool on the Hill was the cover for the ATH 2007 which was hidden on Coombe Hill, smack on the Ridgeway. [PAGE-04]
5	Monarchs Way South	This is a view over Lyme Regis in 1855 by J Drayton Jr taken from View of Lyme Regis Geological Society Picture Library in Mary Anning's time. This is where Charles agreed to board a boat sailing from Lyme Regis at Charmouth, but was stood up by the skipper of the boat Stephen Limbry (his wife refused to let him take the risk as a £1,000 reward had been offered for anybody telling of the whereabouts of Charles and telling of the punishments for anybody helping him). Charles had then to carry on to Shoreham-by-Sea to get a different ship. [PAGE-05]
6	Shropshire Way South	Picture of some Shropshire Blue Cheese. Shropshire Colston Basset is actually made in Nottinghamshire [PAGE-06]
7	Wessex Ridgeway	Cædwalla King of West Saxons, i.e. Wessex, with a small Westland Wessex Helicopter at bottom right. He followed Cerdic as leader of the Gewissae about 150 years later but was the first king of the Gewissae to call himself 'King of the West Saxons', in a charter of 686. The image is from here: File:Cædwalla in Barnard Chichester mural (full body).jpg - Wikipedia [PAGE-07]
8	Viking Way	Image from the Viking 1 Lander on the surface of Mars [PAGE-08]

Publication Order	Path Name	Background Picture
9	Monarchs Way Middle	Charles II and Jane Lane on one horse during his escape in 1651. This is from <i>King Charles the 2d in Disguise rideing before Mrs Lane by which he made his Escape; the Lord Wilmor at a distance from Clarendon's History of the Rebellion</i> (1731 reprint) by Michael Vandergucht. This was during Charles's long ride from Bentley House to Abbots Leigh in Somerset. [PAGE-09]
10	Monarchs Way North	Charles II in the Royal Oak at Boscobel with Colonel William Careless by William Fuller. See William Careless - Wikipedia . [PAGE-10]
11	Cleveland Way	On the left, a cartoon picture of Paul Brown was both the co-founder and first coach of the Cleveland Browns, a team named after him. On the right is a photo of Jim Brown of the Cleveland Browns NFL team, one of the greatest running backs of all time. [PAGE-11]
12	Icknield Way	'Icknield' is often supposed to derive from the Icenii tribe, renowned for their fierce resistance against Roman occupation under the leadership of Queen Boudicca. The picture is of Boudicca and her daughter's Statue in Westminster – see Boudicca's Uprising Against The Romans AD61 . [PAGE-12]
13	Ridgeway NT West	Bledlow Old Cross Postcard. This is a chalk figure on the Ridgeway path. See Bledlow Cross . [PAGE-13]
14	Peddars Way / Hereward Way	Hereward the Wake by Galileus – see Hereward the Wake: Top 5 Surprising Facts [PAGE-14]
15	Great English Walk - South	An image of Cerdic, first king of the Gewissae (AD 519 – 534). Although the Anglo Saxon Chronicle names Cerdic as the first King of Wessex, he would have been known to contemporaries as king of the Gewissae, a folk or tribal group. G E W S underlined. [PAGE-15]
16	Wainwright Coast to Coast Path	Wainwright Memorial Stone outside Blackburn, line drawing generated from photo by AI tool insMind. The original photo is from here: THE WAINWRIGHT MEMORIAL. Bowland climber . I used a bit of AI to try to mislead you; I probably succeeded too well. [PAGE-16]

Einstein tiles with coloured border edges

Each of these tiles is associated with a question and has three elements that provide hints to answering that question.

Pictures

The question often refers directly to the picture(s). In other cases, the pictures provide some assistance [\[EIN-02\]](#).

Position on the page map

The geographical position of each tile on the map is relevant [\[EIN-03\]](#). Sometimes it matches the picture; other times it just provides a hint. For example, the photo of Kingston Bridge, over the Thames, is positioned at Kingston-upon-Hull — mainly because the London part of the map had insufficient space.

Perimeter letters in coloured borders

The borders around each tile are coloured to match the 13 paths [\[EIN-04\]](#). The letters around the border of each tile spell out a What3Words address that provides a hint to answering the question [\[EIN-05\]](#). These provide much more precise locations than the rather blunt tile positions, and can be anywhere in the world whereas the tile positions are limited by space on the maps. The W3W locations generally provide the more specific clue. Unless the alphabet is foreign (Greek or accented characters in Czech), all the letters are ROT-13

enciphered. The Greek and Czech letters are given in plain text. Locations in Czechia, France and Hungary use the Czech, French and Hungarian versions, respectively, of W3W.

The letters (deciphered ROT-13 if necessary) in the segments matching the colour of the path spell out the name of the path when combined with the letters from the other tiles on that path's page **[EIN-06]**.

The remaining letters (again deciphered ROT-13 if necessary), taken anticlockwise from the path colour, give the W3W address.

Geolocated questions

The questions associated with a coloured-border einstein tile have geographical links with the map position and W3W square of the tile (see above). The pictures on the tile provide further hints. Many of these questions are also associated with a bridge or lock photo (see below). Several of them bear the astrological symbol for Gemini, the Twins, ♊ , indicating a 'twin' relationship between the pictured location and the answer to the question. This could be a twinned town or some other similar relationship **[EIN-07]**.

In the table below showing the answers and explanations, the scoring sheet reference is the **[Triplet]** number.

Page (dec)	Location on map page	Trip-let	Question, W3W, pictures	Answer	Key letter	Bridge / lock
1	Lumb Falls	131	What were these six men? W3W of Lumb Falls . Photo of the six young men from the Mick Melvin YouTube video ; six men at 7", bridge at 53", photoshopped together.	They were Young . The original photograph of the Six Young Men at Lumb Falls (this can be found here) inspired Ted Hughes to write a poem about them with that same title.	Y	4
1	Todmorden	113	Whose knife? W3W of Emerson's birthplace at 3, Bank View Cottages (now demolished) in Todmorden, next to Woodhouse Mill. The picture was taken from a 1971 video at 1 minute in.	This is the knife that Lemmy (of Motorhead) gave to Keith Emerson of Emerson, Lake and Palmer, one of the more extreme Prog Rock bands of the 70s and 80s.	E	6
1	Middleham	324	Which king grew up next door from age 13? French W3W ///rimons.pagne.marbrer of Agincourt Battle signboard; twin symbol. Picture of Freya Brewer on a horse from Ben Haslam Racing.	Richard III moved to Middleham Castle in 1465 at the age of 13 and stayed there for 3 years. He inherited the castle in 1471. Middleham is twinned with Agincourt - see town signboard . Ben Haslam Racing stables are right next to the old Middleham castle.	R	21
1	Sandal, Wakefield	344	Where did the man finally arrested here reputedly keep his treasure? W3W of Three Houses Inn , Sandal, Wakefield. Cigarette card depicting John "Swift Nick" Nevison.	John Nevison, notorious highwayman in Charles II's time, allegedly had a stash of treasure in the old " Adam's Oak " at Ringstone Hill . The landlord of the Ringstone Inn was ordered to have his sign taken down for harbouring Nevison. Nevison was finally arrested at the Three Houses Inn in Sandal, Wakefield, then called the Magpie. He inspired the poem: <i>Come all raise your glasses and drink to Swift Nick, / A highwayman known to be handsome and quick / A man who could outwit the young and old, / But ended his days on the gallows, we're told.</i>	A	38
1	Heyrod	245	Near which village is the only place in the country where a Northerner's butty might be found among giants' legs? Still from the Among Giants trailer at 1 min 11sec looking over a pylon, plus view from Burbage Rocks at 1 min 16 sec, annotated with 4ZO251. W3W of The Fox and Duck , 438 Sheffield Road, Tinsley (this pub is now closed).	A butty is an unpowered boat towed behind a canal barge. <i>Among Giants</i> is a film about people who work on electricity pylons. Pylon 4ZO251 straddles the Huddersfield Narrow Canal at Heyrod , near Stalybridge; this is the only place where a canal goes <i>through</i> an electricity pylon. The Fox and Duck was one of the filming locations for <i>Among Giants</i> .	H	42

Page (dec)	Location on map page	Trip-let	Question, W3W, pictures	Answer	Key letter	Bridge / lock
1	Hebden Bridge	143	What was to be seen on March 27, 1943? Logo of Hebden Bridge Little Theatre W3W of Hebden Bridge Little Theatre next to the Rochdale Canal.	The timeline page on the website for Hebden Bridge Little Theatre lists all the plays that they have ever put on. On 27 Mar 1943 the theatre showed Eden End by JB Priestley.	E	43
1	Stanage Edge	335	What is Joe under? Picture of Joe Brown, with a cigarette in his mouth, hanging off The Dangler. W3W of The Dangler on Stanage Edge.	The Dangler , on Stanage Edge. Stanage is a rock climbers paradise in the Derbyshire Peak District. Joe Brown himself was a rock-climbing pioneer in the 1950s and never did easy things. The Dangler is a classic overhanging rock and Joe was the first to climb it.	D	53
2	Kingston upon Hull (not enough room on the London page)	144	If the quartet started here at horse fair, passed George and his foe and The Barley Mow, where did it turn? W3W location of Kingston upon Thames bridge (the road over it is Horsefair). Picture of the Kingston upon Thames bridge.	In Jerome K Jerome's book <i>Three Men in a Boat (To Say Nothing of the Dog)</i> , the party started at Kingston upon Thames, passed The George and Dragon at Wargrave and The Barley Mow at Clifton Hampden, and turned back at Oxford . They abandoned their return trip "a little below Days Lock" near Dorchester-on-Thames and caught the train back.	O	34
2	Roos, Yorkshire	311	What was the first name of the light-footed wife who danced for her husband in the cow parsley? Picture of the album cover for Marillion's <i>Script for a Jester's Tear</i> . W3W location of Dents Garth Wood in Roos.	JRR Tolkien formulated the story of Luthien Tinuviel and Beren in the Churchyard of Roos church, when John's young wife Edith Tolkien danced for him in a "Hemlock Grove". He was recovering from trench fever in the Yorkshire Wolds during WWI. This appears to be Dent's Garth Wood, which still has a glorious understorey of frothy cow parsley (an umbellifer like hemlock). <i>Script for a Jester's Tear</i> was Marillion's first album. They took their name from Tolkien's The Silmarillion but had to shorten it for copyright reasons. Two of the main characters in this book are Beren and Luthien, who, according to their gravestone, represented John and Edith.	E	69
2	York	323	Outside the walls there are 29 places where weapons may be grasped. Twelve belong to one grouping, eleven to another and six to which third? Picture of a white rose, symbolizing Yorkshire. W3W of York Minster cathedral	The three Ridings of Yorkshire are each divided into administrative areas historically named <i>wapentakes</i> . This term is of Scandinavian origin and meant "the taking of weapons". York city itself is not in any of the Ridings, which terminate at the walls of the City. West Riding has 12 wapentakes, North has 11 and the East Riding has 6.	E	

Page (dec)	Location on map page	Trip-let	Question, W3W, pictures	Answer	Key letter	Bridge / lock
3	Telford	114	When they played in this arena a drum solo was 13th. What came next? Photo of Status Quo playing in the QEII Arena, Telford. W3W of the QEII liner , now a floating hotel in Dubai.	Status Quo played at the Telford Arena (now the QEII Arena) in Telford on 13th Dec 2006. Track 13 was a drum solo, followed by Roll Over Lay Down . See here .	R	16
3	Hay Inclined Plane	211	What reached 207 feet in 1797? (<i>An update was issued to reflect information showing that this was already true in 1793.</i>) Picture of biplane built by Victor Sylvander of Hay (Australia) with a date of publication of the newspaper and the page number of the article. Details are reproduced in the Flickr entry above. W3W of the HQ of The Riverine Grazier in Hay.	207 feet - height of the Hay Inclined Plane on the Shropshire canal in 1797 (and probably already in 1793). The Riverine Grazier on 22 Dec 1999 reported that in 1915 Victor Sylvander had built and flown a biplane at Hay in New South Wales, Australia. Sylvander was among the first successful aeroplane builders in Australia, his workshop being the paint room in a coach factory. Hay, a plane and a slight misdirection for how high the plane flew (not very).	H	33
3	Dothill Park	312	Where did the founder grow up and marry 100 years earlier? Einstein picture of Downing College Cambridge with the Ai Weiwei trees in front of it. Ai is a Chinese artist and activist who displayed some of his work at Downing College. W3W of Downing College , Cambridge.	Sir George Downing - builder of Downing Street. His son George Downing was brought up at Dothill Park estate by Sir William Forester. He was married to Forester's daughter Catherine (Wikipedia names her Mary) in 1700, aged 15, but left England soon after. He died childless because he could not get a divorce from Mary. His will stated that if all of his 4 heirs died childless, his estates and money should fund a new college in Cambridge - Downing College. He died in 1749; his last heir Jacob Downing died childless in 1764, and a long lawsuit followed. The college was eventually founded in 1800.	D	40
3	Lilleshall	325	Where did the owner of this training place himself get trained on the Driveway? Hogwarts? Photo of Brad The Brief racing at the Curragh, trained at Manor House Stables W3W of Manor House Stables .	Michael Owen co-owns Manor House stables near Malpas in Cheshire. One of his horses is pictured. As an England junior, he trained at Lilleshall National Football Academy here . The Driveway run was a punishment handed out at Lilleshall and suffered by Owen. According to Danny Webber (Manchester United), "The house (Lilleshall) itself is exactly like Hogwarts in Harry Potter".	L	49

Page (dec)	Location on map page	Trip-let	Question, W3W, pictures	Answer	Key letter	Bridge / lock
3	Start Point	453	<p>What location was Tara filmed in?</p> <p>Three pictures:</p> <ul style="list-style-type: none"> - Tara in Start Point lighthouse, mirrored - Beachy Head lighthouse, not mirrored - Start Point lighthouse, not mirrored. <p>W3W location is Beachy Head, overlooking the lighthouse there; location of one of the publicity shots for that episode.</p>	<p>Start Point lighthouse, location for a 1968 episode of <i>The Avengers</i>. Series 6, episode 8 was called <i>All Done with Mirrors</i>. It is set in the fictional Carmadoc lighthouse but was filmed at Start Point lighthouse and Beachy Head. This einstein tile is (appropriately) a mirror image of the tiles used for the other questions.</p> <p>Going through the page from this Start Point tile takes you to the einstein tile question triplet 523 on page 4 about James Bond. The answer to this is Huntercombe Golf Club, where the Ridgeway path (as it passes in front of the first tee) is the start point for the 1300-mile footpath perambulation.</p>	S	
4	Marlow, twinned with Budavar in Budapest.	132	<p>On the wall of which family's home was a painting rediscovered which was later sold for \$285,700?</p> <p>Marlow is twinned with a neighbouring district of Budapest (Budavar), so the twin symbol is used to place the einstein tile on the Ridgeway NT East page.</p> <p>W3W of the Judit Virag Art Gallery in Budapest. ///mecses.siker.életcél. (Hungarian)</p> <p>Picture of Hugh Laurie on <i>Didn't It Rain</i> album, playing a <i>little</i> piano. Date of Dec 13th 2014 in text.</p>	<p>This was on the set of the film Stuart Little. Hugh Laurie was a lead actor in this film. Róbert Berény's 1920s painting Sleeping Lady with Black Vase had long been considered lost. A set designer for the film had purchased the painting at an antiques store in Pasadena, California, for \$500 for use in the film, unaware of its significance. In 2009, art historian Gergely Barki, while watching Stuart Little on television with his daughter, noticed the painting, and after contacting the studios was eventually able to track down its whereabouts.</p> <p>It was sold at auction at the Judit Virág Gallery in Budapest on December 13, 2014, for \$285,700.</p> <p>An interesting thing was spotted by two teams: the civil engineer William Tierney Clarke designed a suspension bridge over the Thames at Marlow as the prototype for a much larger bridge in Budapest – the Szchenyi Chain Bridge [Bonus 04]. Another Twin!</p>	L	9
4	Bushy Park	124	<p>Which royal residence did the 13 first turn towards?</p> <p>W3W location for Bushy Park, Terenure, Dublin as a twin.</p> <p>Photo of the original 13 runners in the Bushy Park car park.</p>	<p>Parkrun started on 2nd Oct 2004 in Bushy Park, with 13 runners.</p> <p>Twitter (X) has a post showing the original poster and route: runners turned left (south) on exiting the car park, towards Hampton Court Palace.</p> <p>This is also a nod towards ATH 2008 Treasure Location.</p>	H	15

Page (dec)	Location on map page	Trip-let	Question, W3W, pictures	Answer	Key letter	Bridge / lock
4	Bletchley Park	331	Who provided cribs even after a dog had been flattened? W3W of Bletchley Park Hut 6 (where Enigma decoding took place). Picture of Babs the dog .	The double agent Treasure aka Nathalie Sergueiew was recruited by the Abwehr in WWII and sent to Spain. She immediately volunteered to MI5 in Madrid and then travelled to the UK — but without her dog Babs, whom the British refused because of quarantine regulations. Babs was later run over by a car in Algeria. Sergueiew provided valuable material for Operation Double Cross (D-Day) which deceived the Germans as to where the D-Day landings would take place. She was fired a week after the landings, but MI5 continued to send messages supposedly from her which provided cribs to Bletchley Park for breaking the daily Enigma codes.	T	22
4	Dulwich College	122	With what did Polaris, James Caird and Polar Circle associate? W3W location of Dulwich College . Picture of Sir James Key Caird .	Polaris was the original name of Shackleton's Endurance , which has recently been rediscovered 3,000 ft deep under the Weddell Sea. Polar Circle was the original name of the last HMS Endurance (on which my brother-in-law served as an officer). James Caird was a 23ft whaler on Endurance that made the trip from the Weddell Sea to Elephant Island and thence to South Georgia. It is now on display in Dulwich College.	E	37
4	Berkhamsted	432	What did the town get because Roger was rescued from starvation in Canada? Photo and W3W of William Key's headstone at Plot 7 in the Rectory Lane Cemetery, Berkhamsted.	A canal-side totem pole . William Key founded William Key & Son timber yard, trading with Canada. In 1963, this was bought by Alsford's, a family timber firm from Leyton, East London. John Alsford's younger brother, Roger, left the family firm to seek his fortune in Canada. He fell on hard times and was rescued from starvation by the people of a Kwakiutl First Nations village. John travelled to Canada to bring Roger home. He was welcomed by the Kwakiutl and together they smoked a ceremonial pipe, during which John agreed to commission a totem pole from their artist-in-residence, Henry Hunt.	T	41
4	Weedon Bec	212	Where would they have been at home if Napoleon had invaded? Picture of Keir Starmer and David Lammy at a North London derby (actually at Tottenham, but the W3W prevails). W3W of the centre of Arsenal's Emirates Stadium pitch.	Weedon Bec . The Royal Ordnance Depot was built there on the Grand Union Canal at the time (1802) of the fear of Napoleonic invasion. The Royal Arsenal was to move there if London came under threat.	W	51

Page (dec)	Location on map page	Trip-let	Question, W3W, pictures	Answer	Key letter	Bridge / lock
4	Kempton Park	342	<p>He spun round tracks against the clock on thematic occasions, mixing recorded hits.</p> <p>Picture of a desert orchid flower - eulophia petersii. We originally used a picture of the tanker Desert Orchid, but this made the question too easy.</p> <p>W3W of Cheltenham Racecourse finishing line</p>	<p>The famous racehorse Desert Orchid was officially grey, but actually a thematic white. RECORDED HITS is an anagram of DESERT ORCHID.</p> <p>He was a National Hunt jumper and raced only 13 times on left-handed (anti-clockwise) racetracks, as he tended to jump to the right when tired. He was never entered for the (left-handed) Grand National but was never outside the top 3 at the (left-handed) Cheltenham Gold Cup which he won in 1989.</p> <p>The einstein tile is placed over Kempton Park, where there is a statue of the horse celebrating his favourite racecourse.</p>	D	54
4	Fenny Stratford	425	<p>What sort of pound stretches furthest near the Red Lion?</p> <p>W3W and picture of The Red Lion pub at Fenny Stratford, lock 22.</p>	<p>A sump pound. This is a canal's lowest point. The longest one in England is at Fenny Stratford on the Grand Union Canal, between locks 21 (Cosgrove) and 22 (Fenny Stratford). Here, action is required to remove water (rather than to add it, as for a summit pound), since each boat movement adds to the water in the sump pound.</p>	S	70
4	Huntercombe	523	<p>Where did the winner of this match say he held his handicap?</p> <p>Picture of Stoke Park 18th Green from the James Bond film Goldfinger with Goldfinger putting out in his match against James Bond.</p> <p>W3W of 18th green at Stoke Park. Royal St Marks is the book venue (a thinly disguised Royal St Georges), but the film was shot at Stoke Park golf club.</p>	<p>Huntercombe. James Bond and his creator, Ian Fleming, were both members here and had handicaps of 9.</p> <p><i>Was there a glint of triumph, quickly concealed, in Goldfinger's pale eyes? He said indifferently, 'That suits me. Anything you like. Off handicap, of course. I think you said you're nine.'</i></p> <p>'Yes.'</p> <p><i>Goldfinger said carefully, 'Where, may I ask?'</i></p> <p><i>'Huntercombe.' Bond was also nine at Sunningdale. Huntercombe was an easier course. Nine at Huntercombe wouldn't frighten Goldfinger.</i></p> <p>As noted in the answer to triplet 453, this is the start point for the perambulation. The 1st tee is here.</p>	H	
4	White Horse Bridge, Wembley	443	<p>What rapid tour had a 0.8 ground shaking love story here in June?</p> <p>Photo of Romeo and Juliet by Ford Madox Brown.</p> <p>W3W of White Horse Bridge (thematic) outside Wembley Stadium.</p>	<p>During Taylor Swift's (=rapid) Eras tour, the song Love Story registered as a 0.8 magnitude earthquake in Wembley on 23 June 2024. Tremors were measured by UCL on each of the 3 nights. Love Story is about Romeo and Juliet.</p> <p>The Eras tour also registered a 2.3 magnitude earthquake in Seattle on 23 July 2023 (the Swift Quake), and another in Edinburgh on 7 June 2024.</p> <p>Interestingly, Taylor is fascinated by the number 13, considering it her lucky number. She was born on 13th Dec 1989, turned 13 on Friday 13th and her fans had 13's painted on their left hands for the Eras tour.</p>	E	

Page (dec)	Location on map page	Trip-let	Question, W3W, pictures	Answer	Key letter	Bridge / lock
5	Glastonbury	135	Who headlined here in a bulletproof vest? Picture of Mike Visceglia (1 min 20 sec). W3W of Patmos Greek Island, twinned with Glastonbury. Twin symbol showing the twin town status.	Suzanne Vega headlined Glastonbury in 1989. Both she and her bassist, Mike Visceglia, had received death threats, resulting in Scotland Yard advising them not to play. They did, but in bulletproof vests - it was a "deranged fan of the bassist" who made the threat, but thankfully nothing came of it.	V	7
5	Maunsel Lock	145	If the Sun is at cklso, what is between bdgrie and bdiegr? Photo of a statue of Gustav Holst (composer of <i>The Planets Suite</i>) in Cheltenham. Twin sign is included as the W3W location is of the opposite Uranus marker near Bridge 27, south of the Sun.	Uranus. One of the highlights of the Bridgwater and Taunton Canal is the Somerset Space Walk. This features all of the planets in the Solar System at various points along the canal towpath, at scaled locations from their distance from the Sun. A scale model of the sun can be found at Higher Maunsel Lock No 2, with planets set along the towpath for six miles in both directions. cklso is the second anagram of 'locks', alphabetically; bdgrie and bdiegr and the 12th and 13th permutations of 'bridge'. The northern Uranus is between Bridges 12 and 13, at ///social.tilt.fast .	U	17
5	Lyme Regis	123	Who died in 1833 collecting sea shells by the sea shore? W3W of Lyme Regis beach , near Black Ven. Picture from the golf course overlooking Lyme Regis and the beach taken by Steve.	Mary Anning's dog Tray (a black and white terrier) was her constant companion when she was collecting fossils on Lyme Beach. He was buried in a cliff fall at Lyme Regis / Charmouth; the fall narrowly missed Anning at the same time. Mary herself died in 1847.	T	19
5	Wincanton	213	Who lodged here for a while? W3W of 4 Treacle Mine Road, Wincanton . Picture of Agnes Nitt . Twin town symbol.	Agnes Nitt , a witch in 3 different Discworld novels joined the Ankh Morpork Opera (as Perdita Dream) but before moving to live at the Opera House, she lodged at 4 Treacle Mine Road, Ankh-Morpork. Terry Pratchett wrote the Discworld novels, of course. I loved Pablo's description of them from the answers to the 1992 Hunt - "the decreasingly funny series". Many would disagree with him, of course. Wincanton is very keen on Terry - there was a Discworld Emporium shop in it (which still operates online) and it twinned with Ankh-Morpork - the largest city on the Discworld - in 2002. They have named several streets after those in that fictional city, including Treacle Mine Road.	N	26

Page (dec)	Location on map page	Trip-let	Question, W3W, pictures	Answer	Key letter	Bridge / lock
5	Mere, Wiltshire	341	Which multi-platinum selling thatcher lived here? Picture of the album cover of Led Zeppelin IV, showing just the edge of the framed picture, superposed with a road sign for Shaftesbury Road. W3W of the location of his house (now demolished) in Shaftesbury Road, Mere.	The picture is of 19th-century thatcher Lot Long (possibly Longyear) from Shaftesbury Road, Mere, Wiltshire. In 1971, Led Zeppelin released their multi-platinum LP Led Zeppelin (commonly called IV but actually with no title and 4 symbols – one for each member of the band). The cover featured a photo of a Birmingham landscape from a ruined house (although it was actually taken from this spot). The wall of the ruined house had a photo of an old man carrying reeds on his back. Robert Plant found a copy of the photograph of the thatcher in an antiques shop in Berkshire, but the original has since been re-discovered and is kept in the Museum in Devizes.	L	28
5	Parnham	444	Whose resting place is this? Aerial photo of the grave on the hillside West of Parnham House, with "For Valour" added. Taken from Google Earth. W3W location of a memorial plate (stuck in a tree) in the wood just off the A3066 near Malplash.	William Rhodes-Moorhouse , first airman to receive the Victoria Cross (hence the "For Valour"). It was awarded in 1915 posthumously after he bombed the German-held rail junction at Courtrai. The full story of it can be found here . His buried in a private cemetery, pictured. His grave is in the shape of WWI airplane. This is on the hillside west of Parnham House , Beaminster, Dorset.	R	45
5	Whitchurch Canonicorum	412	Whose Latin Holy Cross? Picture of the flag of Dorset which is the cross of St Wite (Anglo-Saxon), also known as St Candida (Latinised) W3W of the Church of St Candida in Whitchurch Canonicorum	St Candida . It is also called the St. Wite's Cross after the Dorset saint buried at Whitchurch Canonicorum . St Wite was an Anglo-Saxon woman who lived as a hermit on the cliffs and was killed defending Dorset residents against a Viking raid. King Alfred the Great built a church to honour her. Her shrine at Whitchurch Canonicorum was once a popular pilgrimage destination.	C	63
5	Lewesdon Hill, Broadwindsor	433	Who was forgotten? Picture of a Spitfire Vb with modified number to match that of the actual aircraft. W3W of the memorial south of Broadwindsor.	On Sunday the 15th of March 1942, Jean de Cloedt crashed his Spitfire Mk Vb BL463 into Lewesdon Hill whilst delivering it to RAF Bolt Head in Devon. He is known as "The Forgotten Pilot", as his legacy and the crash were forgotten in the 1960's after the initial memorial became overgrown. Local farmer Andrew Frampton bought the name to public attention . His grandfather was one of the three Home Guards who investigated the crash and recovered the propellor of the aircraft (which is now on display in Beaminster museum). He gathered funding and organised a memorial service on 15 March 2022, during which a new, permanent memorial was unveiled.	C	64

Page (dec)	Location on map page	Trip-let	Question, W3W, pictures	Answer	Key letter	Bridge / lock
6	Haughmond Hill	112	What connects Siegfried Farnon, Bill the Butcher, the Hay Festival and an Archbishop of Canterbury? W3W location of Owen House Shrewsbury . Picture of the Lock at Ors on the Sambre-Oise Canal, France, where Owen was killed.	Wilfred Owen , war poet, was associated with the area and Haughmond Hill in particular. There is a walk on the hill named after him. Patrons of the Wilfred Owen Association include: - Samuel West (Siegfried Farnon in All Creatures Great and Small) - Daniel Day-Lewis (Bill the Butcher in Gangs of New York) - Peter Florence (patron of Hay Festival) - Dr Rowan Williams (ex-Archbishop of Canterbury)	O	2
6	Haughmond Hill	134	Outside which house did this lady serve lemonade and sandwiches to passing walkers? W3W of the location on the hill . Picture of Nancy herself.	Hill Cottage , near the top of Haughmond Hill. It was the home of Nancy Spragg (1813 - 1904). It has since been demolished and the W3W location is based on the 1880s map and the 1916 map showing the spring at the top end of her garden.	H	31
6	Sheffield	315	Where was this picture actually taken? Picture of Tommy Lee Royce outside cell 13 in the prison. W3W of Sheffield prison , now the Old Town Hall on Waingate.	Happy Valley was a popular police drama on BBC. The Happy Valley story has Royce (the baddie) being held in Sheffield prison, which is the Old Town Hall. The actual filming for this part of Series 3 was done inside Shrewsbury Prison , which is now a tourist attraction. Cell 13 was a welcome bonus for the setters.	S	36
6	Telford	232	What is this lad's name? Pictures of Niagara Falls in 1883 , the liner Russie and a Stanhope Medal . W3W of Webb's birthplace in High Street, Dawley, Shropshire. A memorial to him is on the other side of the road.	Captain Matthew Webb , first person to swim the English Channel and subject of John Betjeman's poem <i>A Shropshire Lad</i> . Webb was awarded the first Stanhope Medal for attempting to rescue a man who fell overboard from the Cunard Line ship <i>Russia</i> . He died when attempting to swim through Whirlpool Rapids below Niagara Falls. Betjeman lived in Uffington (then in Berkshire) from 1934 to 1945.	W	
7	Macclesfield	215	What was the name of the works where the original strength of man was milled? W3W of Gold Hill , Shaftesbury. Picture of a boy cycling down the hill taken from the advert for Hovis.	Publicity Works on the Macclesfield Canal. Its story is told here . Hominis Vis is Latin for "Strength of Man" which was the winner, in 1890, of a competition to replace the existing name of the flour "Smith's Patent Process Germ Flour". The famous advert was filmed on Gold Hill, Shaftesbury in 1973.	P	10

Page (dec)	Location on map page	Trip-let	Question, W3W, pictures	Answer	Key letter	Bridge / lock
7	Imber village	544	A semi-precious stone; a fiery residue; a card game; a brown mineral. What's been abandoned? Picture of Tyneham village in the 1940s. Twin symbol. W3W of Tyneham St Mary's Church .	Amber, Ember, Omber and Umber; Imber Village is the one abandoned. Imber is a deserted village which has many similarities with Tyneham in Dorset (hence the twinning symbol, although they are not twinned villages). Both were evacuated in 1943 to allow for military training to take place for D-Day. The MoD have never allowed the original residents back into the villages except on rare occasions.	I	59
8	Intended to be Radcliffe on Trent, but ended up too far NW. Setter's error, apologies.	354	Kingdom in US meadow holds some words used here. But which is missing? W3W location of Radcliffe Camera , Oxford. Portrait of John Radcliffe with a vial of herbs and a skeleton superimposed.	There are two hidden Latin words in the first 4 words of the clue - Dominus Mea. The missing word is Illuminatio , the motto of the University of Oxford being <i>Dominus Illuminatio Mea - The Lord is my light</i> . Picture of John Radcliffe, who had many notable buildings of Oxford named after him, including the iconic Radcliffe Camera (part of the Bodleian library). Radcliffe took a certain iconoclastic pride in having read little, remarking once of some vials of herbs and a skeleton in his study: "This is Radcliffe's library." However, he endowed a substantial amount of money for the founding of the Radcliffe Camera.	I	29
8	Burghley House	431	Where did a gardener greet a queen and present her with a mole's box? Picture of a Duncton Wood mole, picture of a box bearing text "Till a Virgin had reigned 33 years" W3W location of Burghley House , main home of William Cecil.	William Cecil owned Theobalds in Cheshunt as well as Burghley House near Stamford and Cecil House in London. An entertainment for Queen Elizabeth I in May 1591 included speeches by the gardener and molecatcher, who had cleared the ground and had found a box containing a jewel. This was presented to the queen as treasure trove, accompanied by the verse : <i>I was a giant's daughter of this isle, Turned to a mole by the Queen of Corn: My jewel I did bury by a wile, Again never from the earth to be torn, Till a virgin had reigned thirty-three years, Which shall be but the fourth part of her years.</i> The mole from Duncton Wood also has a link with Uffington Oxon, in that the holy place of the moles of Duncton Wood is Uffington. The White Horse, the Blowing Stone and Dragon Hill are all mentioned in the books.	T	32

Page (dec)	Location on map page	Trip-let	Question, W3W, pictures	Answer	Key letter	Bridge / lock
8	Isle of Axholme	411	<p>He was initially creative, often responsibly nurturing every learner in Universal Studios. A walk around which island is named after him?</p> <p>Pictures of Cornelius Vermuyden School on Canvey Island.</p> <p>W3W of Kelfield on the west bank of the River Trent, where he had his home.</p>	<p>Cornelius (first letters of words in the clue) Vermuyden was an engineer who, amongst other things, drained the Fens and Hatfield Chase on the Isle of Axholme in Lincolnshire. He thus has a path named after him around the Isle of Axholme, as well as the pictured school on Canvey Island and a branch of the LDWA in South Yorkshire.</p> <p>The School website also uses a Cornelius acrostic.</p>	A	46
8	Alkborough	454	<p>What is the name of the turf version of this design from where you can reputedly see a white horse?</p> <p>Picture of the labyrinth in Chartres Cathedral.</p> <p>French W3W for Chartres Cathedral.</p>	<p>Julian's Bower – this is a turf labyrinth built to the "standard Chartres design". See also here.</p> <p>On a clear day, it's allegedly possible to see Kilburn White Horse, 45 miles away.</p>	J	
9	Acton Turville	434	<p>You stupid boy, what have you lost from here?!</p> <p>Picture of the clock and blank wall where the Tollboard was.</p> <p>W3W of the cottage location in Acton Turville.</p>	<p>Pike Cottage is now a holiday cottage rented out by Sykes Cottages. An old toll house, it used to be called Turnpike Cottage. The Tollboard was above the name board but below the clock but has been removed – see here. Answers of "Turn" are allowed as that is also missing from the name of the cottage.</p> <p>"You stupid boy" is a reference to Dad's Army - Captain Mainwaring used to call Private Pike "you stupid boy".</p>	T	71
9	Cropredy	442	<p>If a College hosts their fringe festival who are they? Their identity can be cleared up if I recant on porno tv.</p> <p>W3W and picture of the house "Fairport" in Fortis Green, North London.</p>	<p>On the weekend of the annual Fairport's Cropredy Convention, celebrating Fairport Convention, the nearby Brasenose Arms holds a Fringe Festival. Fairport Convention anagrams to "if I recant on porno tv". The pub was built on land purchased from Brasenose College.</p> <p>Fairport Convention were named after the house 'Fairport' in Fortis Green where rhythm guitarist Simon Nicol's father had his medical practice, and where they rehearsed in the early days.</p>	F	75

Page (dec)	Location on map page	Trip-let	Question, W3W, pictures	Answer	Key letter	Bridge / lock
9	Elton Giants Maze farm in Glos. Location is used simply to get the word Giants.	435	<p>What did the people (including James Madison) show here on 18 July 1994 at about 22:30 to validate the trust of believers?</p> <p>Picture of Stephen Hawking, who did a voiceover on the track <i>Keep Talking</i> which is the track being played at 52:38 in the video when Enigma Publius is shown.</p> <p>W3W of the old NY Giants Stadium in East Rutherford, New Jersey, demolished in 2010 and now the car park of the replacement MetLife Stadium.</p>	<p>In 1994, a mysterious user by the name of 'Publius' posted internet messages about an enigma connected with Pink Floyd, saying that this would be confirmed during a concert at the Giants Stadium in New Jersey on 18 July 1994. During the rendition of <i>Keep Talking</i>, the lights in the front of the stage duly flashed up Enigma Publius.</p> <p>The NY Giants Stadium was where the Floyd performed in 1994. It was replaced with the MetLife Stadium in 2010.</p> <p>Publius = "People" in Latin. Under the pseudonym "Publius", James Madison (4th president of the USA) wrote about 85 essays in 1787 - 8 supporting ratification of the Constitution of the United States.</p> <p>Dave Gilmour of Pink Floyd said that the Publius Enigma was "some silly record company thing that they thought up to puzzle people with" — an early example of viral marketing.</p>	E	76
9	Wroxton Abbey	451	<p>Who was twelfth overall, second of his place, second of his party, and second to fall in a particular way following another party?</p> <p>Photo of Wroxton Abbey, Lord North's ancestral home.</p> <p>W3W All Saints Church, Wroxton, where he is buried.</p>	<p>Lord North was the 12th Prime Minister of England. Frederick North was also the 2nd Earl of Guilford, the 2nd Tory Prime Minister and the 2nd to have to resign because of a vote of No Confidence by Parliament (in this case, for his alleged mishandling of the US War of Independence). The reference to "another party" is to the Boston Tea Party.</p>	N	
9	Througham Slad	462	<p>Who produced a strange air display here?</p> <p>Picture of a model aircraft resting on a rock on the Hergest Ridge. Same type as on the cover of the album. A RipMax Ivinghoe was the plane often used by Mike Oldfield.</p> <p>W3W of Througham Slad Manor.</p>	<p>Mike Oldfield produced an album by Pekka Pohjola called <i>The Mathematician's Air Display</i>. He also played on the album, which was recorded at Througham Slad Manor in Gloucestershire in 1977.</p> <p>Oldfield was a keen aeromodeller in those days, particularly during the recording of his first UK number 1 album, <i>Hergest Ridge</i> (not <i>Tubular Bells</i> as most people think which was released a year earlier but only went to #1 after <i>Hergest Ridge</i> was #1 for a week). He was living in Kington, Herefordshire at the time and slope soaring with an Ivinghoe Beacon model glider on Hergest Ridge itself.</p> <p>There was some confusion over the album, though and it is possible that Mike was more heavily involved in the album than was originally thought – see here.</p>	O	

Page (dec)	Location on map page	Trip-let	Question, W3W, pictures	Answer	Key letter	Bridge / lock
9	Daventry	415	LL114B was 4th, LL94 was 5th, Br11 was 39th, Br7 was 43rd, LL5A was 45th and Br72 was 50th. Who was 34th and made the capture on Easter Day? Picture of John Lambert . W3W 2 miles south of Daventry on Banbury Road.	The LL and Br references are to the names of bridges on the Leeds & Liverpool and Bridgewater Canals. The positions given are the 'Regicides': the signatories (in order of signing) to the death warrant of Charles 1st, whose names match the bridges. Sir Richard Ingoldsby was the 34th Regicide; he captured John Lambert on Easter Day ² , 22 April 1660, two miles south of Daventry. Lambert was a leading Parliamentarian General, but not a regicide. Ingoldsby captured him in the hope of gaining a pardon from the returning King. He did get such a pardon. LL114B Walley Road Bridge, Edward Walley L94 Livesey Hall Bridge Michael Livesey. Br11 Walton Bridge, Valentine Walton Br7 Moore Bridge, John Moore LL5A Fleetwood's Bridge, George Fleetwood B72 Norton Bridge, Gregory Norton	I	67
10	Snitterfield	424	What's missing, Chris? Picture of the old (now empty) pub sign (taken from StreetView). W3W location of the old pub in Snitterfield.	The Foxhunter on the Square. The pub was used in an episode of the old soap Crossroads. Chris Tarrant used to use the pub frequently. The Picture shows the old pub sign frame (which is still there) which is missing the actual Foxhunter pub sign. This is outside the new house on the Square called The Foxhunter. Bonus marks for identifying which Chris. Appropriately, the first word of the Bridge/Lock acrostic is FOXY.	F	1
10	Hawkesbury Junction / Sutton Stop	244	A naked lady provided water for a long time. By what name is she known now? W3W for Dartmouth Tourist Centre . Picture of Lady Godiva on a horse, accompanied by a picture of Sutton Stop / Hawkesbury Junction on the Oxford and Coventry canals showing the engine house.	Coventry Canal (and the Oxford canal) received water from the Coventry Colliery, pumped by an old steam engine called Lady Godiva. The engine, originally located at Hawkesbury Junction, is currently in Dartmouth Tourist Centre as a working engine, renamed the Newcomen Memorial Engine . See here .	N	39

² The change from Julian to Gregorian calendar, and the tardiness of the church in adopting the new calendar for calculating the date of Easter, confounds online calculators. However, Samuel Pepys, writing contemporaneously, records 22 April 1660 as Easter Sunday (<https://www.pepysdiary.com/diary/1660/04/>).

Page (dec)	Location on map page	Trip-let	Question, W3W, pictures	Answer	Key letter	Bridge / lock
10	Tardebigge New Wharf	422	<p>What did DWP do for Cressy? Woodcut illustrations as per Roaringwater Journal.</p> <p>W3W of canal adjacent to Tardebigge Wharf where Rolt met Aickman.</p>	<p>The most famous and influential book about canals is <i>Narrow Boat</i> by LTC (Tom) Rolt. The book tells the story of a journey aboard Rolt's narrowboat <i>Cressy</i>. It was illustrated by the famous country writer Denys Watkins-Pitchford.</p> <p>On Saturday 11 August 1945 Rolt met with Robert Aickman on <i>Cressy</i>, moored above the top lock of the Tardebigge flight on the Worcester & Birmingham Canal, and formed the Inland Waterways Association (IWA).</p>	I	52
10	Worcester Bridge	233	<p>Who took (and put in his garden) the balustrade of the bridge? Picture of three penguins from the Waddle of Worcester art exhibition. W3W location of the centre of the Worcester Bridge.</p>	<p>Edward Elgar.</p> <p>The penguins are part of an Art exhibition by Waddle of Worcester, who have set up a number of statues of penguins all around Worcester to be sold off for charity. The penguins are:</p> <ul style="list-style-type: none"> • Elgar's Enigma (relating to the Enigma Variations), • Little Blue makes a wish – the click through page at the bottom (26. Cripplegate Park) mentions the story about Elgar taking the balustrade and • Captain Blackbeak 	E	55
10	Worcester	355	<p>Who left because he was slowing down the escape? Picture of a toy Ferguson TE20 tractor. Massey has left Massey-Ferguson. W3W of Barbourne Bridge in the north part of Worcester.</p>	<p>Major General Sir Edward Massey.</p> <p>After the Battle of Worcester in September 1651, Charles II left Worcester with a retinue of cavalry. However, Massey was badly wounded during the Battle, so when the group of fleeing Royalists paused at Barbourne Bridge, he persuaded Charles to continue without him, although the king was reluctant to leave him.</p> <p>Massey was subsequently captured by the Parliamentarians and imprisoned. He escaped several times before the Restoration.</p>	M	66
10	Morton	421	<p>On which farm should these now be located? W3W of the Oak tree in Morton marking the claimed “geographical” Centre of England. Two pictures – one of the Morton Oak and the other of the “Traditional” centre of England at Meriden.</p>	<p>There have been various claims as to what is the centre of England; Morton and Meriden are two of the leading ones. However, the Ordnance Survey defined the centre in 2013 as being at Lindley Hall Farm. A plaque denoting this was erected on 14 June 2013.</p>	L	68

Page (dec)	Location on map page	Trip-let	Question, W3W, pictures	Answer	Key letter	Bridge / lock
10	Rugby School	115	<p>Start at the forge. Take two steps to the castle. Continue another three steps and you'll reach the pub. What nearby siren is it named after?</p> <p>Picture of Thomas Hughes.</p> <p>W3W of Rugby School, where <i>Tom Brown's Schooldays</i> was set.</p>	<p>Thomas Hughes wrote both <i>The Scouring of the White Horse</i> and <i>Tom Brown's Schooldays</i>. The first chapter of TBS mentions Wayland's Smithy, Uffington Castle and the sounding of the Blowing Stone to summon King Alfred's army.</p> <p>The 'steps' are just over 1km. From Wayland's Smithy, 2.086km on a bearing of 63° to grid north is in the middle of Uffington Castle. A further 3.129km in the same direction reaches The Blowing Stone Inn in Kingston Lisle. The Blowing Stone itself is south of the village.</p> <p>These places are also mentioned in <i>Duncton Wood</i>, see triplet 431 on page 8.</p>	B	73
11	Middlesbrough - The Arena	125	<p>By some twist of logic, if 4=Y1, what is 5? W3W for the Arena Middlesbrough, with a Twin sign because Middlesbrough is twinned with Oberhausen in Germany.</p> <p>Picture of the "Speed of Sound" in Baudot code (which is roughly Baudot code ITA2) as per the X&Y Album cover code.</p>	<p>The Arena, Middlesbrough is an old clubbing and music venue on Newport Road. It is now closed, but still shows up on Street View as the Pavilion Theatre.</p> <p>The twin city of Middlesbrough is Oberhausen in Germany. Its arena (the Konig-Pilsener Arena) held the Coldplay Twisted Logic tour on 28 Oct 2005 (text 102805 on tile).</p> <p>The 4th song played in that set was Speed of Sound, track Y1 on the X&Y album. It was followed by track X6 (X&Y).</p>	X	3
11	Whitby	221	<p>Who wrote of a dog running up the steps? W3W and photo of Whalebone Arch in front of Christ Church Cathedral in Port Stanley in the Falklands.</p> <p>Twin symbol.</p>	<p>Bram Stoker - Dracula was the book. Whitby is twinned with Port Stanley in the Falkland Islands. In the novel, Dracula (embodied as a large dog) runs up the 199 steps to Whitby Abbey - a famous view across from the Whalebone Arch in Whitby.</p>	S	12
11	Whitby	133	<p>Who has just joined, although her sister has yet to do so?</p> <p>Picture of a US flag from 13 Dec 1959, when there were 49 states (Alaska having just joined) in 7 rows of 7 stars.</p> <p>W3W of Captain Cook memorial in Whitby.</p> <p>Twin symbol.</p>	<p>Alaska - the 49th State, which joined on 3 Jan 1959. The flag was updated on 4 July 1959.</p> <p>Hawaii, the 50th state, joined on 21 August 1959. The flag was updated at the next July 4th Independence Day celebration in 1960.</p> <p>Captain James Cook voyaged to both Alaska and Hawaii. Whitby is twinned with Anchorage in Alaska and with Waimea on Kauai Island in Hawaii, thus making Alaska and Hawaii sisters themselves.</p> <p>Replicas of the Cook statue now stand in the Cook Memorial Park in Anchorage, and in West Kauai Main Street in Hawaii.</p>	A	20

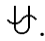
Page (dec)	Location on map page	Trip-let	Question, W3W, pictures	Answer	Key letter	Bridge / lock
11	Trimdon Colliery	351	<p>If Maidenhead was 13th, Sedgefield 3709 and Bromley 3rd, what was 4?</p> <p>Picture of Morning Cloud III yacht with its sail number removed.</p> <p>W3W of Tony Blair's house while he was MP for Sedgefield: Myrobella House, Trimdon Colliery.</p>	<p>Theresa May - 13th PM under Queen Elizabeth II, MP for Maidenhead</p> <p>Tony Blair – PM 2 May 1997 – 27 June 2007 (3709 days inclusive), MP for Sedgefield</p> <p>Harold Macmillan - 3rd PM under QEII, MP for Bromley</p> <p>Ted Heath – Was PM from 18 June 1970 – 28 Feb 1974 whilst being the MP for Bexley. The General Election was held on 28 Feb 1974, when he was elected as member for Sidcup (the Bexley constituency having been removed). He was MP for Sidcup for 4 days (1–4 March 1974) before resigning as PM.</p> <p>Liz Truss was elected leader of the Conservative Party on 5 Sep 2022 but was not appointed PM until 6 Sep, so was PM for only 3 days before the Queen died on 8 Sep 2022.</p>	S	61
11	Whitby	455	<p>After they went fishing for play, where did the trio fancy going by canal?</p> <p>Still from the opening scene of The Fishing Party in Whitby.</p> <p>W3W at Tate Hill Pier, Whitby, where the still from the episode was filmed.</p>	<p>Royal Shakespeare Theatre, Stratford upon Avon. This refers to the first three parts of Peter Terson’s Play For Today trilogy about three miners, <i>The Fishing Party</i>, <i>Shakespeare or Bust</i> and <i>Three for the Fancy</i>. <i>The Fishing Party</i> is set in and around Whitby. In <i>Shakespeare or Bust</i>, the lads hire a canal boat and travel to the RSC at Stratford.</p>	R	
12	Ilford PDSA Pet Cemetery	225	<p>Thematically, if they were followed by an impulsive NCO and a Mottistone fighter, who accompanied, in 1947, a majestic one and the regent of Kyiv?</p> <p>Picture of Mary of Exeter homing pigeon recipient of the Dickin Medal.</p> <p>W3W location the grave of Mary of Exeter homing pigeon in Ilford.</p>	<p>The W3W and the photo alert you to the Dickin Medal for animal bravery. Mary of Exeter (who has a blue plaque to her in Exeter) was a recipient of the medal in WWII.</p> <p>The question gives a cryptic clue to 4 of the 5 horses who have been awarded the Dickin medal: Regal (majestic one), Olga (Regent of Kyiv 955AD) and Upstart all received their Dickin Medal on 11 April 1947 at a ceremony in Hyde Park; the other equine recipients are Warrior (steed of Jack Seely, 1st Lord of Mottistone) and Staff Sergeant Reckless (US horse who served in the Korean War).</p>	U	35
12	129 Kingsway, Holborn	321	<p>What sort of magic did the Vicar, sleepy, speedy and Boots create?</p> <p>Photo of a North American Bullfrog; there is a likely colony of them at Langdon Hills Golf Club, Essex; picture of the clubhouse and one of the lakes on the golf course.</p> <p>W3W of Boots, Kingsway.</p>	<p>Green Bullfrog Natural Magic album was recorded live at a recording studio at 129 Kingsway, Holborn in 1970. The site is now in the basement of a Boots store. Steve worked next door to it for a year in 2013. The album was released in 1971. For contractual reasons, the names of the performers were pseudonyms: The Vicar = Rod Alexander; Sleepy = Charles "Chas" Hodges later of Chas and Dave (because he was always asleep); Speedy = Ian Paice (the fastest drummer around at the time); Boots = Richie Blackmore (always wore purple suede boots).</p>	N	44

Page (dec)	Location on map page	Trip-let	Question, W3W, pictures	Answer	Key letter	Bridge / lock
12	Epping Forest	313	<p>What won her an award in 1980?</p> <p>Picture of the cover of Make Death Love Me.</p> <p>W3W of ATH 2019 treasure location in Epping Forest.</p>	<p>Make Death Love Me won Ruth Rendell the Martin Beck award for Best Crime Novel in Swedish translation in 1980. Rendell was also the theme of the 2019 ATH.</p> <p>Steve Hames collected ticket 13 (after his team had already collected ticket 4) and never declared it. Hence the Postcode code for WHO FOUND TICKET 13? and the 'vector' question mark next to question 313, featuring an ATH chest geolocated in Epping Forest.</p>	M	47
12	Stevenage	214	<p>What follower of Gunga Din inspired Rollie, Molly and James?</p> <p>Photo of Gunga Din film poster.</p> <p>W3W location of the old Vincent factory in Stevenage.</p>	<p>The Black Lightning motorbikes, made by Vincent, was the successor of the Gunga Din motorbike that had defined an era.</p> <p>They were built at the Vincent factory at the noted location. This is now part of the Thomas Alleyne Academy and bears a blue plaque.</p> <p>Rolland "Rollie" Free used one to break the motorbike world speed record in 1952 and became the instigator of the term "bathing suit bike" as he stripped to his trunks to improve the aerodynamics.</p> <p>Molly and James were the characters in the Richard Thompson song "1952 Vincent Black Lightning".</p>	B	48
12	Newmarket Rowley Mile.	345	<p>Which winner at Winchester was sired by a handicap winner over this Mile? How curious ...</p> <p>Picture of the Rowley Mile racecourse at Newmarket, and the statue of King Charles II at Newmarket.</p> <p>W3W of Newmarket Rowley Mile.</p>	<p>The Adventure of Silver Blaze – a Sherlock Holmes Story.</p> <p>Silver Blaze was sired by Isonomy, a real racehorse of the 1870s and 80s. Isonomy won the Cambridgeshire Handicap over the Rowley Mile at Newmarket in 1878.</p> <p>In the story, Silver Blaze killed his trainer John Straker by kicking him in the head whilst he was trying to make the horse lame for an upcoming race at Winchester. However, Holmes solved the mystery of who killed Straker and disguised the horse, which went on to win the race.</p> <p>The Adventure of Silver Blaze included the famous line "the curious incident of the dog in the night-time", which inspired a book, a play, and a film of the same name.</p>	S	57
12	Milton, Cambs	352	<p>Who was the first to win a million?</p> <p>Picture from the back cover of the book Caroline Bradley – A Tribute.</p> <p>W3W of the White Horse pub in Milton.</p>	<p>Milton was a show jumping horse who was the first to win £1m in prize money on the Jumping circuit. He was brought to prominence by Caroline Bradley, who sadly died aged 37 in 1983. Pictured, from the back cover of a book celebrating her life.</p> <p>John Whitaker then took him (a gelding) over and won many events, all except an Olympic medal, over the next 10 years (1985 - 1994).</p>	M	62

Page (dec)	Location on map page	Trip-let	Question, W3W, pictures	Answer	Key letter	Bridge / lock
13	Wantage Radiation Laboratory	223	Which school, opened by Sir John of the Follies, was here from its 8th year until its parent moved back east 11 years later? W3W of the actual Wantage location of the school, now a factory for Crown Packaging on Grove Technology Park. Photograph of a De Havilland Venom outside the old RAF Grove airfield, together with an aerial view of the airfield itself in 1946.	Sir John Cockroft was a director of AERE Harwell . " Cockroft's Follies " were filters added to the chimneys of the reactors at Windscale, late in the design process. People thought that they would be of no use at all, but Cockroft insisted. When reactor Pile 1 caught fire in 1957, the filters stopped 95% of the radioactive particles from escaping. Phew! The Harwell Isotope School was opened by Cockroft in 1951 on the Harwell site. In 1959 it was moved to the Wantage Radiation Laboratory, on the site of the old RAF Grove airfield. The Laboratory was closed in 1970, and its work and personnel were transferred back to Harwell. More details and a photo can be found here . Grove Technology Park had a full-sized De Havilland Venom jet on a stand outside the entrance until it was knocked off its stand and destroyed by Storm Eunice in 2022.	I	8
13	Standedge Tunnel	513	Where is both deepest and highest, matching the battleground? W3W of Dragon Hill , Uffington. Picture of Dragon Hill . Picture of Standedge Tunnel, Diggle End .	Standedge Tunnel . At 645 feet above sea level, Standedge Tunnel on the Huddersfield Narrow Canal, is both the highest and the deepest (and also the longest) canal tunnel in the country. Coincidentally, Dragon Hill (where, reputedly, St George slew the dragon) underneath the Uffington White Horse is exactly the same height - 645 feet, OS spot height 197m (although Wikipedia claims differently) [Bonus 07] .	S	18
13	Uffington	243	What is the name of this track? W3W location is the recording studio where <i>In Utero</i> was recorded, i.e. Pachyderm Studios in Cannon Falls, Minnesota. In Utero album by Nirvana back cover showing an image of the Uffington White horse [Bonus 05] and "Exclusive International Bonus Track".	Nirvana In Utero track 13 is Gallons of Rubbing Alcohol Flow through the Strip* . European and Australian versions of In Utero describe this as 'Exclusive International Bonus Track', added so that the European version did not compete with the US version. The * is noted on the cover as "Devalued American Dollar Purchase Incentive Track" on the back cover of the album.	G	30
13	Wootton Rivers, Marlborough	222	If Jack says it's YD and it was OD two hours ago, what will he say it is in another two hours? Picture of Jack Spratt and his wife in a nursery rhyme book by Margaret Tarrant. W3W location of Wootton Rivers Bottom Lock 51 , close to the Church.	The W3W location of the lock on the Kennet and Avon canal is slightly away from the village of Wootton Rivers, so Hunters needed to look a little bit wider in order to find St Andrew's church . However, there is not much else around that location! The church has a clock on the tower which was made by Jack Spratt, whose namesake features in the nursery rhyme "Jack Spratt could eat no fat". One side has, instead of numbers, the letters GLORYBETOGOD . They start at 1, so YD is 5 o'clock, OD is 3 o'clock and 7 o'clock is ED .	E	50

Page (dec)	Location on map page	Trip-let	Question, W3W, pictures	Answer	Key letter	Bridge / lock
13	Hungerford, West Berks	235	<p>What does the resident here get in return for a kiss?</p> <p>Picture of two Tuttimen kissing a woman with an orange in her hand (obscured by the border of the einstein tile).</p> <p>WWW of 2 Bridge St, Hungerford.</p>	<p>In Hungerford, on the Kennet & Avon Canal, every Hocktide (the Monday and Tuesday in the second week after Easter) two Tuttimen (Tithing Men) are chosen, originally to collect rent. As part of the process they would kiss the lady of each house that has Commoner's Rights (such as 2 Bridge St) and give her an orange. The Tuttimen are accompanied by the Orange Man, whose job is to carry the oranges. The oranges recognise the town's support for William of Orange, who negotiated the terms of his reign as King William III at Hungerford's Bear Hotel in 1688.</p>	O	72
13	Abingdon	242	<p>When the heavyweight twins (an underground leader and a classical queen) were 16 and 17, they moved from Berkshire to where?</p> <p>Photo of Abingdon County Hall Museum with inserts of Pluto (a New Zealand rock band with the cover of their album Sunken Water) and Dido (part of the cover of her single Thank You).</p> <p>W3W of Council Offices for the Vale of the White Horse.</p>	<p>Oxfordshire.</p> <p>DIDO and PLUTO are twin heavy water reactors on the Harwell nuclear site. They went critical in autumn 1956 (DIDO) and autumn 1957 (PLUTO) so on 1 April 1974 they were 16 (PLUTO) and 17 (DIDO) years old.</p> <p>The whole Vale of the White Horse district moved from Berkshire to Oxfordshire on 1 April 1974, due to a local council reorganisation.</p>	O	
13	Uffington	423	<p>As Arthur was to Brown, so was Brown to whom?</p> <p>Picture of The Crazy World of Arthur Brown, for no other reason than the name!</p> <p>W3W of Tom Brown's School Museum in Uffington.</p>	<p>In Tom Brown's Schooldays by Thomas Hughes, Tom attends Rugby School. He is mentored by Harry "Scud" East, and subsequently acts as mentor to George Arthur, a frail newcomer.</p> <p>The museum in Uffington contains a lot of interesting material about Thomas Hughes and the White Horse, as well as about Uffington itself.</p>	E	

Page (dec)	Location on map page	Trip-let	Question, W3W, pictures	Answer	Key letter	Bridge / lock
14	Burghley	142	<p>Ten later on, what is my name?</p> <p>Image of horses approaching the Mini Taxis Drop, fence 19 in the Velká pardubická (Grand Pardubice Steeplechase) in the Czech Republic. See video at 5min 55 sec in.</p> <p>W3W of fence 19 at Pardubice, in Czech. The nearby fences 10 and 27 are jumped at 2:38 and 7:57 in the video.</p> <p>Picture of William Cecil, 1st Baron Burghley.</p> <p>Twin symbol.</p>	<p>Fence 19 at Burghley is named after the National Hunt racecourse at Pardubice in the Czech Republic, which has an annual horserace. the Velká pardubická (Grand Pardubice Steeplechase), to rival the Aintree Grand National. If anything, Pardubice is more brutal!</p> <p>10 fences later on (Fence 29) at Burghley is the charity fence for the My Name's 5 Doddie Foundation, referencing Scottish rugby player Doddie Weir who unfortunately developed Motor Neurone Disease. The foundation is a really worthwhile charity.</p>	D	5
14	Water Newton	111	<p>Who fulfilled her vow?</p> <p>W3W and picture of the Water Newton Lock and Mill on the River Nene. Also included is picture 12 showing a plaque with Chi-Rho and inscription.</p>	<p>"Anicilla (Amcilla?) has fulfilled the vow she promised".</p> <p>The Water Newton treasure (a Roman hoard) was found (by ploughing over it) in a field near the Roman Pottery town and fort of Durobrivae. The hoard consisted of silver and gold votive things and vases. The votives include the Chi Rho symbol, early Christian crosses, superimposing X and P symbols on each other. One of these has an inscription on it by Anicilla...</p>	A	11
14	Whittlesey	234	<p>What type of bear?</p> <p>Picture of Walldürn festival - picture 9.</p> <p>W3W location of Walldürn Haupstrasse where the procession goes.</p> <p>Twin town symbol.</p>	<p>Whittlesey holds an annual Straw Bear Festival in January. A man is dressed in Straw and parades and dances through the streets with Morris Dancers and other local music from musicians.</p> <p>In 1999 the Straw Bear made friends with a German Straw Bear from Walldürn near Frankfurt, which celebrates its own Straw Bear Festival on the Monday before Shrove Tuesday.</p> <p>The towns of Whittlesey and Walldürn are now twinned.</p>	S	13
14	Sandringham Estate	333	<p>What time is it for the shooter?</p> <p>Picture of Edward VII shooting at Sandringham, with a picture of Big Ben showing 11:30 am.</p> <p>W3W on Sandringham Estate, supposedly the location of the photo.</p>	<p>Noon.</p> <p>Sandringham time was set to be 30 minutes ahead of GMT by King Edward VII. It was maintained that way until 1936, when Edward VIII reverted to GMT.</p> <p>This was done to increase the amount of time available in the evenings for hunting.</p>	N	60

Page (dec)	Location on map page	Trip-let	Question, W3W, pictures	Answer	Key letter	Bridge / lock
14	Harling Road	353	<p>What was released at 49% at 1pm on Friday 13th Sept 2013?</p> <p>Picture of a dragon from the whisky label.</p> <p>W3W of The English Distillery in Norfolk.</p>	<p>Chapter 13 Whisky from St George's Distillery (hence the dragon) of The English Whisky Company.</p> <p>Steve spotted this whilst researching the 2016 Hunt about Whisky and Beer. Chapter 13 was on sale in the distillery in Roudham, Norfolk. It just had to be included as a question. The label is based upon the dragon Ancalagon from the Tolkien book, the Silmarillion.</p>	C	65
15	Chartley Castle, Staffs	413	<p>Who wrote this postscript?</p> <p>Image of the postscript.</p> <p>W3W of Chartley Castle ruins. Mary Queen of Scots was imprisoned here during the Babington Plot.</p>	<p>Thomas Phelippes is most remembered for his postscript to the "bloody letter" sent by Mary, Queen of Scots, to Anthony Babington regarding the Babington plot. Phelippes decoded the letters, which were transported by the double agent Gilbert Gifford.</p> <p>In one crucial intercepted letter from Mary to Babington, Phelippes added the text as a postscript, asking Babington to name all his co-conspirators.</p> <p><i>I would be glad to know the names and qualities of the six gentlemen which are to accomplish the designment;</i></p> <p>His doing so was the key to Francis Walsingham dismantling the plot and led to all the executions, including that of Mary.</p>	P	23
15	High Legh, Cheshire	141	<p>Under what star sign is this quiz published, NASA?</p> <p>Publication date is 13th December 2024.</p> <p>W3W location is High Legh Community Observatory, near Jodrell Bank.</p> <p>Picture is the diagrammatic constellation of Ophiuchus.</p>	<p>The 13th sign of the astrological Zodiac is Ophiuchus, the Serpent Bearer. This was proposed by Walter Berg in 1970, its dates are 29 Nov - 18 Dec. He designed the following symbol for the astrological sign . We thought of including it in the einstein tile, but it made the question too easy to Google and solve.</p> <p>High Legh Community Observatory has an optical telescope. (The nearby Jodrell Bank doesn't.)</p> <p>Walter Berg, Astrologer, was born in Chorley, Lancs, hence the location on the Great English Walk page.</p> <p>NASA reputedly agreed the creation of this additional zodiac sign, but it didn't in reality.</p>	O	24

Page (dec)	Location on map page	Trip-let	Question, W3W, pictures	Answer	Key letter	Bridge / lock
15	Alderley Edge	414	<p>Where did his progeny finish his novel about this local legend?</p> <p>W3W location of the Wizard's Well on Alderley Edge.</p> <p>Photo of the Wizard's Well with its inscription.</p>	<p>Alan Garner wrote a children's fantasy book in the late 1950's called <i>The Weirdstone of Brisingamen</i>. It was one of my favourite books as a child.</p> <p>The book featured the legend of the Wizard of the Edge. Essentially, this is about a cavern on Alderley Edge that shelters many hundreds of sleeping knights and their milk white mares, awaiting the call to awake and defend the nation in its direst need. They are looked after in their slumber by a powerful wizard (possibly Merlin?).</p> <p>The cavern is reputedly near Stormy Point on Alderley Edge and the well is nearby.</p> <p>An inscription 'Drink of this and take thy fill for the water falls by the Wizard's will', were reputedly created by local stone mason Robert Garner, great-great-grandfather of Alan.</p> <p>Alan Garner wrote the book at his house Toad Hall in Blackden Trust.</p>	T	27
15	Market Drayton	445	<p>Behind which pub is the current main tower of the Red Cross? There might be a sleeping monk inside it...</p> <p>Picture of the Red Cross trademark of Stones brewery.</p> <p>W3W of old Stones Brewery next to the Trent & Mersey canal in Stone, Staffs.</p>	<p>The Joules brewery is located behind the Red Lion public house in Market Drayton, which sells Slumbering Monk ale (amongst others). Joules has an interesting history, particularly in its rivalry with the neighbouring brewery, Bass.</p> <p>Monks brewed at the priory in Stone from the 1500s until 1749, blessing each barrel and marking it with a red cross.</p> <p>Francis Joule moved to Stone in Staffs and set up 'Joule's Stone Brewery'. His descendant, John Joule, adopted this sign of the Red Cross for his ales and registered this trademark in 1867: one of the earliest beer trademarks. Because it was registered as a trademark before the charity of the international Red Cross was created, it has remained extant.</p> <p>James Joule, scientist and collaborator with Lord Kelvin, was part of the earlier family brewery in Salford founded by William Joule, brother of Francis.</p>	R	56
15	Smalley Common, Derbyshire	334	<p>Where could a setter be living secretly?</p> <p>Still from a video of the lake just by the Hames Covert wood.</p> <p>W3W location of 334 Belper Road shows the name Hames Covert.</p>	<p>Hames Covert, a wood near Smalley Common in Derbyshire. 334 Belper Road has a garden which is open on the National Garden Scheme of which the wood is a part.</p>	H	58

Page (dec)	Location on map page	Trip-let	Question, W3W, pictures	Answer	Key letter	Bridge / lock
16	Northallerton	121	Which Archbishop supported me by organising an army? Picture of King Stephen of Blois . W3W location of the Memorial Stone for the Battle.	The Battle of the Standard , took place on 22 August 1138 on Cowton Moor near Northallerton. English forces under William of Aumale repelled a Scottish army led by King David I of Scotland. King Stephen of England, fighting rebel barons in the south, had sent a small force (largely mercenaries), but the English army was mainly local militia and baronial retainers from Yorkshire and the north Midlands. Archbishop Thurstan of York had exerted himself greatly to raise the army, preaching that to withstand the Scots was to do God's work. See more on Thurstan here .	T	14
16	Marske	314	If he finished the walk here, where is his last long resting place? W3W location of the road junction in Marske . Picture of the delicious snack Butterscotch Peanut Butter Haystacks .	Alfred Wainwright completed his C2C field research in Marske . His final walk with Mark Richards was from Reeth to Marske. He then went off to write and illustrate the book. His final resting place is where his ashes were scattered, at Innominate Tarn near Haystacks in the Lake District: "A last long resting place by the side of Innominate Tarn , on Haystacks, where the water gently laps the gravelly shore and the heather blooms and Pillar and Gable keep unfailing watch. A quiet place, a lonely place. And if you, dear reader, should get a bit of grit in your boot as you are crossing Haystacks in the years to come, please treat it with respect. It might be me."	I	25
16	Osmotherley	231	Which town is named after a drowning here? Picture of the trig point on the top of Roseberry Topping. Taken by Steve. W3W of Roseberry Well , which is just northeast of the trig point.	Osmotherley. The legend has it that Osmund, King of Northumbria, and his wife, had an only son Oswy. The "wise" foretold the child would on a certain day be drowned. On that day, the mother took the boy to the top of Roseberry Topping, far from any watery depths. But she fell asleep, Oswy wandered away and came across a small well. Seeing his face reflected in the water, he endeavoured to grasp it, fell in, and was drowned. The mother found the dead body of her child; she died a few days later. They were buried side-by-side, and Oswy-by-his-mother-lay became Osmotherley. The tale is also related here .	O	74

Page (dec)	Location on map page	Trip-let	Question, W3W, pictures	Answer	Key letter	Bridge / lock
16	Sutton Bank	224	<p>Who is still (appropriately) looking over horses like this sic white one?</p> <p>Picture of the Kilburn White Horse with a glider over it. Sutton Bank (airfield used by the Yorkshire Gliding Club) in the background. The inset photo is of a vet tending a white horse.</p> <p>W3W of Sutton Bank.</p>	<p>James Herriot wrote many books about veterinary work in the Yorkshire Dales. His veterinary practice was located in Thirsk and his real name was James Alfred Wight or Alf Wight.</p> <p>He died in 1995 in Thirlby. His remains were cremated and scattered on the top of Sutton Bank, a favourite view of his. The wooded slopes behind the glider are Sutton Bank. The inset photo is of a vet tending a white horse. The “sic white” has two meanings:</p> <ul style="list-style-type: none"> • A sick white horse • (Sic) Wight (pronounced the same but spelt wrongly) looking at the Kilburn White Horse. 	W	

Photos of Locks and Bridges

There are 76 of these photos. Printing double-sided according to the Cyrillic instruction on p1 puts each onto the reverse of one of the colourful geolocated tiles that accompanies a question. The locks and bridges are numbered 1 to 76; they provide the order in which to read the letters that result from the questions. Unfortunately, Mitch had not thought to arrange the 3000+ photos in his 'canal trips' folder by lock or bridge number, so seeking the numbers we needed entailed a painstaking trawl. 14 of those ultimately selected feature the narrowboat *Dragonfly*, in which he used to own a share. A dozen or so numbers were missing from his collection; we mounted expeditions on foot, bike and motorbike to collect those that we needed. The canals on which the locks and bridges are to be found are of no significance to the Hunt, but we have decided to award points for correctly identifying each lock or bridge. The table below shows the locations. We awarded a single bonus point for each of these pubs that were identified ([BL01] to [BL76]).

All of the photos were taken by the setting team, except for the ones noted explicitly below with links. While we have included for information what we believe to be the most commonly used name for each lock or bridge used, we recognise that many have alternative names. Marking is mainly on the basis of waterway.

No.	Canal
1	Oxford; Hawkesbury Jct Bridge
2	Peak Forest; Marple Lock#2
3	Leek branch, Caldon; Hazlehurst Turnover Bridge
4	Leek branch, Caldon; Hardy's Bridge
5	Oxford; Whiting's Bridge
6	Ashby; Bramcote Rd Bridge
7	Trent & Mersey; Cow Pasture Bridge
8	Peak Forest; Marple Lock #8
9	Oxford; Napton Lock #9
10	Caldon; Hazlehurst Lock #10
11	Caldon; Hazlehurst Lock #11
12	River Wey Navigation; Pyrford Lock
13	Peak Forest; Marple Lock #13
14	Trent & Mersey; Swarkestone Lock Bridge
15	Basingstoke; Frimley (aka Deepcut) Bottom Lock
16	Rochdale; Lobb Mill Lock
17	Rochdale; Old Royd Lock
18	Oxford; Claydon Lock
19	Oxford; Hollyhill Bridge
20	Coventry; Boot Bridge
21	Ashby; Wykin Bridge
22	Rochdale; Gauxholme Lower
23	Rochdale; Gauxholme Middle
24	Basingstoke; Frimley Lock #24
25	Caldon; Stockton Brook Road
26	Shropshire Union; Turnover Bridge
27	Grand Union (Leics Branch); Mountain Barn Bridge

No.	Canal
28	Ashby; Dadlington Bridge
29	Macclesfield; Clarke Lane Bridge
30	Rochdale; Todmorden Changeline Bridge
31	Trent & Mersey; Meaford Bottom Lock
32	Trent & Mersey; Meaford House Lock
33	Caldon; Brick Kiln Bridge
34	Oxford; Easenhall Lane Bridge
35	Trent & Mersey; Tatenhill Lock Bridge
36	Trent & Mersey; Barton Turnover Bridge
37	Shropshire Union; Machins Barn Bridge
38	Ashby; Fox Bridge
39	Trent & Mersey; Mill Bridge
40	Grand Union; Clemens Street Bridge
41	Shropshire Union; Lambarts Bridge (aka Grub Street Bridge)
42	Caldon; Cheddleton Bridge
43	Macclesfield; Foden Bank Bridge
44	Ashby; Carlton Bridge
45	Kennet & Avon; Caen Hill Locks
46	Ashby; Fairfield Bridge
47	Trent & Mersey; Gallows Bridge
48	Grand Union (Leics Branch); Freeman's Bridge
49	Oxford; Newbold Tunnel
50	Caldon; Churnet Junction Bridge
51	Trent & Mersey; Fradley Junction Bridge
52	Grand Union (Leics Branch); Ivy Lodge Farm Bridge
53	Trent & Mersey; Woodend Lock Bridge
54	Grand Union (Leics Branch); Laughton Manor Farm Bridge
55	Rochdale; Clegg Hall Bridge
56	Macclesfield; Swindalls Bridge
57	Trent & Mersey; Royles Bridge
58	Worcester & Birmingham; Harris Bridge
59	Grand Union (Leics Branch); Bungalow Bridge
60	River Kennet (joined to K&A); Newbury Bridge
61	Grand Union (Leics Branch); Foxtan Bottom Lock Bridge
62	Rochdale; Coney Green Lock
63	Grand Union; Isworth Farm Bridge
64	Macclesfield; Pearson Bridge
65	Grand Union; Cosgrove Bridge
66	Kennet & Avon; Potter's Lock
67	Grand Union; Turnover Bridge (Chessets Wood near Knowle)
68	Trent & Mersey; Turnover Bridge
69	Monmouthshire and Brecon; High Houses Bridge

No.	Canal
70	Huddersfield Narrow; Wool Road Bridge
71	Trent & Mersey; Colwich Lock Bridge
72	Kennet & Avon; Cobblers Lock
73	Trent & Mersey; Trent Lane Bridge
74	Kennet & Avon; Hungerford Lock
75	Rochdale; Grimshaw Lane Vertical Lift Bridge
76	Trent & Mersey; Hoo Mill Bridge (great name!)

All bridges and locks apart from Pyrford Lock #12 (which is blank) really carry the numbers they are used to represent. The numbers that weren't clear (or were cropped off when put into an einstein tile) were enhanced either with Photoshop or by adding an annotation to the PDF. In the latter case, enlarging the PDF on-screen produced much better results than downloading the annotation-less photo.

Eleven of the photos bear anagrams of LOCKS or BRIDGE. The number of the lock or bridge is the sequence number of that permutation in an alphabetical list of all the permutations of LOCKS or BRIDGE (e.g. CKLOS and BDEGIR would both indicate 1). We provided these as a hint towards solving the CHALK cipher. Roger had the idea of clueing the locks in this way while labouring rather painfully up the Caen Hill flight of locks, on a warm-down after running the Quakers Walk parkrun.

The numbers were chosen to give a thematic message: the gap from each to the next maps to a number from 1 to 13, with red anagrams indicating letters in the second half of the alphabet and black anagrams indicating the first half **[Code 15]**. Nobody spotted this one!

Anagram	Number	Gap	Letter
CLOSK	10	10	W
COSLK	18	8	H
BEDIGR	27	9	I
BEGIRD	34	7	T
BEIGDR	39	5	E
BERIDG	47	8	H
BGDEIR	49	2	O
BGDRIE	54	5	R
BGERID	60	6	S
BGIRDE	65	5	E
BGRIDE	71	6	S

The Start Point

Sorting the letters provided by the answers to the corresponding questions into lock / bridge order gives the message:

foxy devil pass thru start point lighthouse and then ramble widdershins MCCC miles to B of E **[Code 16]**

This message had two main intentions:

Firstly, to provide a clue as to where to find "THE START" referred to on the Poster.

It's clear that questers seeking loot
must first walk on to find the start

Einstein tiles work just as well in the mirror image. ATH 2014 used the idea of jigsaw pieces on the flip side of the page to provide a secondary code and instructions. I had already planned to use a jigsaw on the Poster and

to use the flip side mirror image in an einstein tile to indicate that the Start was on the flip side of the printed page.

Start Point lighthouse is a fabulous and iconic location on the South-West Coast Path in South Devon. Some research had found that the Avengers Episode “All Done with Mirrors” used it as a filming location. So, a mirror image einstein tile with question and answer relating to Start Point lighthouse was ideal. Then the mirror image tile could be placed on the flip sided page to the start of the walk around the trails to the end point (i.e. treasure location).

Being a mirror image, this is the only tile that has the footpath colours in the correct order around its edges.

The intention was to have the start point 1300 miles (decimal miles in this case) away from the End Point (i.e. the treasure location). The end point was originally intended to be at Thirteen Hundred Down on Salisbury Plain, a mile or so away from the Westbury White Horse. Thirteen Hundred Down is the only place on the OS Maps of Great Britain that has the word “thirteen” in it. Thirteen Hundred is thematic, of course.

The distances are measured along the footpaths from the Start Point, using the Long Distance Walkers Association’s descriptions for those paths as the definitive routes and mileage measurements (some other maps or sites have different values for the path lengths or different routes for the paths). I searched for several years for an appropriate start point. One was the War Memorial in Upper Sundon (Beds). This was right next to house number 13 and was on the Icknield Way, about 17 miles from Ivinghoe Beacon where the Poster photograph was taken. The paths involved at that time also included the Pennine Way (instead of the Great English Walk), Offa’s Dyke Path and the Wysis Way, so the distances were about right to Thirteen Hundred Down.

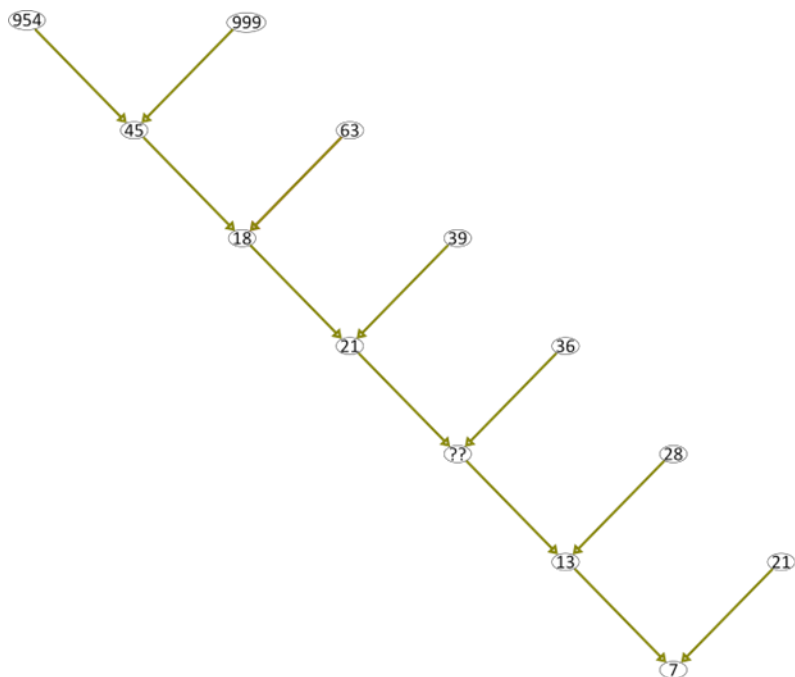
However, other problems on the route meant that I had to abandon that idea and switch the paths in the published Hunt. That meant changing the starting point from Upper Sundon to Huntercombe so as to keep the 1300 miles (MCCC in Roman Numerals). Also, finding that there were no suitable treasure hiding places near the Westbury White Horse meant that I had to change the whole thing or find a workaround. That workaround was to call Thirteen Hundred Down “THE BEGINNING OF THE END” or “B of E” and then provide additional instructions to move on to the actual treasure location **[Code 17]**. This was also flagged in the Rebus on Page 12 (15 decimal).

So:

- Foxy devil – see below
- Pass thru start point lighthouse – go through the page to the mirror image tile on the other side of the double sided print Hunt, i.e. Huntercombe **[Code 18]**.
- And then ramble widdershins – walk on the paths in an anticlockwise direction.
- MCCC miles – 1300 miles (decimal)
- To B of E – to Beginning of the End.

Secondly, the sentence was meant to provide letters to be used in the Listener Code (see elsewhere). So, I needed a few extra letters to make up the full alphabet. Hence Foxy Devil at the beginning of the message. However, as I had to change the treasure location I had to switch Hunters onto the White Horse Trail. That joins the Kennet and Avon Canal at Foxhangers lock, so it gave us the opportunity to switch the two names around to make it Devilhangers lock.

Number puzzle on page 12



The diagonal Number Puzzle on Page 12 is based on one by Nob Yoshigahara, who considered it his masterpiece. We tweaked it very slightly on the top two rows so as to make it harder to Google the answer. It looks intriguing. It requires no advanced mathematics. But it holds a trap.

Looking at the number tree, your eyes go to the top and you ask “how can 954 and 999 make 45?”

Got it: $999 - 954 = 45$. Carrying on down the tree:

$$63 - 45 = 18$$

$$39 - 18 = 21$$

$$36 - 21 = 15 \text{ (so that is the answer methinks!)}$$

But let’s carry on down the tree for completeness:

$$28 - 15 = 13$$

$$21 - 13 = 8?????$$

But it says 7 – must be a typo! No, it isn’t.

Let’s try again; how else can 954 and 999 produce 45? Of course:

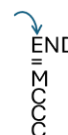
$9 + 5 + 4 + 9 + 9 + 9 = 45$ Just add the digits together. This solution works all the way down the tree, so the answer is:

$2 + 1 + 3 + 6 = 12$ [Code 19]. That is confirmed by the fact that the bubble lies over the Lock gate arm of Lock 12 Pyrford Lock on the River Wey (which has no number on the lock gate but is marked as Lock 12 on [this website](#)).

And finally: $1 + 3 + 2 + 1 = 7$.

Thirteen Hundred Down

The rebus shown right on Page 12 (15 decimal) indicates that ‘the beginning of the end’ is Thirteen Hundred Down [Code 17]. This is on Salisbury Plain, 7km west of the abandoned village of Imber and 1.5km south of the Westbury White Horse. This is approximately 1300 miles anticlockwise round the footpath loop from the start point at Huntercombe.



The location of the rebus was random, i.e. not geolocated on the map where it was shown.

We considered Thirteen Hundred Down as a treasure site, but as it is within the Imber Ranges danger area, we could not guarantee that it would be accessible. There were some places nearby that we investigated. For example, Gruffalo Beech Wood on the edge of White Scar Hanging is on the Wessex Ridgeway and is close to the Westbury White Horse. However, it does not have any suitable hiding place and is a long way away from any car parks or public access, so hunters would have to walk a mile or more each way. That's a bit much to ask in the depths of winter.

CHALK permutations

The green box on page 4 contains 75 permutations of the word CHALK. Each possible permutation indicates a number from 1 to 120, namely the position of that permutation in an alphabetical list of all the permutations of the word. We provided the LOCKS and BRIDGE anagrams as a lead-in to this message; teams seemed to spot this pretty quickly.

The further wrinkle was that each number was an ASCII code, giving the message

FROM YOLK: head 40m S.E. to METAL SEAT; sit on seat & regard treasure tree.

We had to capitalise the Y of YOLK because the ASCII code for a lower-case y is 121, beyond the permutation range. But including capitals and punctuation characters was deliberate, to stop teams from decoding the message simply using a monoalphabetic substitution solver. CHALK being permutation 32 and hence giving the ASCII space was serendipitous but very pleasing **[Code 20]**.

Polybius questions

The blocks of questions on (decimal) pages 11, 12, 13, 14 and 15 have no matching einstein tile and are in Book Antiqua font. This is the same font used for the red numbers on p1 and the blue / purple numbers on p2. The first letters of the eight questions on p12 spell POLYBIUS **[Code 21a]**. Some of the clues needed to be rather contorted to obtain this; sorry. The answers all contain (or consist of) words or numbers that are items 1 to 5 in particular ordered sets. Where possible, the clue gives an item with a relevant name (e.g. Everest Double Glazing, square K2 on a chessboard, Lord Snowdon, January Jones, Theresa May, Athens Georgia, Jack London, Boy George, *Let It Be*) rather than the object that appears in the set. Each set appears at least twice.

The Christmas Card showed the start of this set of questions against a yellow background, with a similar yellow background for the red numbers on page 1 that form an easy Polybius cipher giving the traditional Christmas greeting. We hoped that this, on top of the POLYBIUS acrostic, would be a good hint that the answers to the questions would somehow produce the digits 1 to 5.

In the table below showing the answers and explanations, the scoring sheet reference is the **[Triplet]** number.

No	Question	Answer	Group	Seq.
511	High place sickeningly spurned by Alfred.	Ill Crag (not a Wainwright)	English mountains	4
525	Strong? Stable? But definitely outlasted a lettuce.	Theresa May	Months	5
514	Beat Johnny's gold ring into a drinking vessel for Harry.	Goblet of Fire (reference to Johnny Cash's <i>Ring of Fire</i> , gold disc)	Harry Potter books	4
512	Scottish brindled upland.	Braeriach (Gaelic translation)	Scottish mountains	3
322	What protected Ted Moul't's feather?	Everest double glazing (advertisement)	World mountains	1
521	Lee falls off a small sandy island.	Just drop off the key, Lee	50 Ways	5
522	Principality hosts the cairn of Gelert's master.	Carnedd Llewelyn	Welsh mountains	3
452	Old Charterhouse boys can't dance.	Genesis (band formed at Charterhouse School which recorded the single "I Can't Dance")	Bible	1
262	Little scouse miracles, but how many?	Six (Walton sextuplets)	Perfect numbers	1

No	Question	Answer	Group	Seq.
524	You need to find something to accompany Queen's burning masala.	Mississippi (...Queen, ...Burning, ...Masala)	Rivers	4
241	Build a ceramicist's sequence from sunny place that the oldest pro footballers call home.	Order of the Phoenix (Arizona Cardinals and Phoenix Suns both play in Phoenix, sunniest city in USA)	Harry Potter books	5
561	Its quadrennial cycle mostly produces V but occasionally H.	February (short, short, short, long = Morse V; exceptions for 1800, 1900, 2100 etc. which are not leap years)	Months	2
364	Upland where you could find the King's place with Elton, maybe, in the land of beautiful waters	Ben Nevis (Ben Elton; Charlestown is on the island of Nevis, 'land of beautiful waters')	Scottish mountains	1
532	She who played with the insane men and bore a female warrior.	January Jones (<i>Mad Men</i> , Bellatrix tattoo)	Months	1
533	Cultural figurehead George used digits for painting?	Boy George, <i>Colour by Numbers</i> . Question would have been better worded as '...who used...' (sorry)	Magpie song	4
534	2^(3,0,1,3)?	8128	Perfect numbers	4
535	500m in China, part of a list on the web?	Li (Chinese mile, and 'list item' in HTML)	Elements	3
553	Under what name did John Griffith offer tooth-whitening and a natural voice?	Jack London (<i>White Fang</i> , <i>Call of the Wild</i>)	Summer Olympics	4
542	The first Greek Christian group?	Alpha (group exploring the basics of Christian faith)	Greek letters	1
343	1234...	Numbers (literally!)	Bible	4
543	Ayer's Rock?	Philosopher's Stone (A J Ayer)	Harry Potter books	1
251	ENG 506, 1,661 @ 39.54 or ENG 638, 3,662 @ 18.03 & 604 @ 27.68; IRL 3000 7:38.59 & 5000 13:03.53	Broad Crag (Cap numbers and batting / bowling stats for Chris Broad, Stuart Broad; 3000m and 5000m bests for Alistair Cragg)	English mountains	5
545	Old e2 or e7.	K2 (chess, descriptive notation)	World mountains	2
441	Rodgers chic.	Nile Rodgers of Chic	Rivers	1
551	Sounds like reggae is fierce.	Scafell (Ska and fell meaning fierce)	English mountains	2
552	Get back originally, single and naked.	Let it Be (The album was originally titled "Get Back", but the name was changed to "Let it Be". It was subsequently released as a single and finally a remix version in 2003 called "Let it Be...Naked")	Elements	4
541	Wherein the red moon went down to Sir Jim's boys and Pops' 1st V; good man.	St Louis (First 5 letters of both Louis Vuitton Cup and Louis Armstrong (Pops) + Saint. Double clue for 'Louis' breaks crossword norms, but this isn't a crossword. Some teams got the music reference and some the sailing – Sir Jim Ratcliffe's team under Ben Ainslie beat the Luna Rossa team in 2024.)	Summer Olympics	3
554	What number did Harry Wood need to reach Romford?	496 (bus from Harold Wood. Other imperfect buses are available.)	Perfect numbers	3
555	Liz's brother-in-law was a shooter.	Lord Snowdon , photographer	Welsh mountains	1
252	That's the flip side.	B	Elements	5
531	An instrument rack usually under the table.	Triangle (instrument, and snooker / pool)	Polygons	1
365	The sol, translated, high.	Lhotse (anagram)	World mountains	4

No	Question	Answer	Group	Seq.
332	If John Barleycorn was 2.2.43.53, what was 2.3.1583?	Exodus (Island Records catalogue numbers 9116 and 9498, prime-factorised)	Bible	2
265	Brother of Gelert's master is also tall.	Carnedd Daffydd	Welsh mountains	4
363	Triangular airline.	Delta	Greek letters	4
155	Blooded thorns in the woods of the forgotten, by whom?	Black metal group Helvellyn (track and album)	English mountains	3
362	Uncle's girl?	April Dancer (The Girl from U.N.C.L.E.)	Months	4
254	Gus jumps aboard.	Hop on the bus, Gus	50 ways	4
154	Where Georgia went to Father Abraham's College, formerly home to some wooden fish?	Athens , Georgia (formerly Cedar Shoals; Abraham Baldwin founded University of Georgia and was a founding father of the US)	Summer Olympics	1
264	Blissful partner of Masonic Margaret, in short.	Sorrow and Bliss , Meg Mason	Magpie song	1
461	Former county town, former island and former port that was beset by devils in the 13th century.	March , Cambs.	Months	3
153	Roy is shy.	You don't need to be coy, Roy	50 ways	3
361	Between G and I, we should be able to come first.	H , first in the periodic table. 'Surface reading' of question alludes to cyclist Geraint Thomas, known as 'G'.	Elements	1
255	Ten radii, five rings, 100 bays and levels B to 5. Where, symmetrically?	The Pentagon	Polygons	3
152	Jack slides backwards	You just slip out the back, Jack	50 ways	1
261	Which dubious disease first arose in North Ore Square?	Stockholm Syndrome (North ore square = Norr malm torg in Swedish)	Summer Olympics	5
151	Shapely Berkshire venue can be reconfigured to be an arts stage in three parts.	The Hexagon (tip of its symbol on W3W is at ///tags.bets.arena : anagram of 'be an arts stage'. 'Shapely' allows the answer to be guessed, and the W3W (if spotted) confirms it.)	Polygons	4
263	Who had an inflated heart that was torn to pieces?	Girl with a Balloon (Banksy; → <i>Love is in the Bin</i>)	Magpie song	3

Using each pair of position numbers within the set to read a message from the same Polybius grid used for the Merry Christmas message on p1 gives:

USE LDWA TO DEFINE DISTANCES [Code 21]

As well as giving this message, the first letters of the answers given in bold above feed into the 'Listener' and 'red rectangle' ciphers. Digits were spelled out. The inclusion of 'you don't need to be coy, Roy' from Paul Simon's *50 Ways to Leave Your Lover* meant that the extracted letter for the other three of the '50 Ways' needed to use the whole line of the lyric, not just 'drop off the key', 'hop on the bus' or 'slip out the back'.

Blue / purple number grid, page 2

This has a yellow background. The Christmas card hint shows both the page 1 Christmas message and part of the first set of Polybius questions with yellow backgrounds added. This is a hint that all three use the same 5×5 Polybius code square. The issue is how to convert the given number pairs, which range from 1–31 (blue) and 2–32 (purple), into indices 1 to 5. Two different methods are needed:

- The **blue** numbers use **binary**. Convert the numbers (which lie in the range 1–31) into binary and count the numbers of 1s [Code 23].
- The **purple** numbers use **primes**. Construct the prime factorisation and count the number of primes used. The Islands Records / John Barleycorn / Exodus clue for question 332 also uses prime factorisation, to establish this in solvers' minds [Code 24].

Assuming that we want to extend the ‘primes’ numbers just high enough to get a 5, the fact that $2^5=32$ is fundamental to the range of numbers produced by each of the methods. The presence of 32 teams in the US National Football League (see poster) is coincidental, although having four equally-sized divisions in each of two conferences does mean that the number of teams will be a multiple of 8.

Number	Blue options (binary 1s)	Purple options (no. of prime factors)
1	1 2 4 8 16	2 3 5 7 11 13 17 19 23 29 31
2	3 5 6 9 10 12 17 18 20 24	4 6 9 10 14 15 21 22 25 26
3	7 11 13 14 19 21 22 25 26 28	8 12 18 20 28 30 27
4	15 23 27 29 30	16 24
5	31	32

For a given index 1–5, both the encoding method and the choice from multiple possibilities (if more than one) were chosen randomly. Out of the 240 digits required, there are only 22 fives, but the small number of options for encoding 5 means that 31 (blue) and 32 (purple) appear relatively frequently.

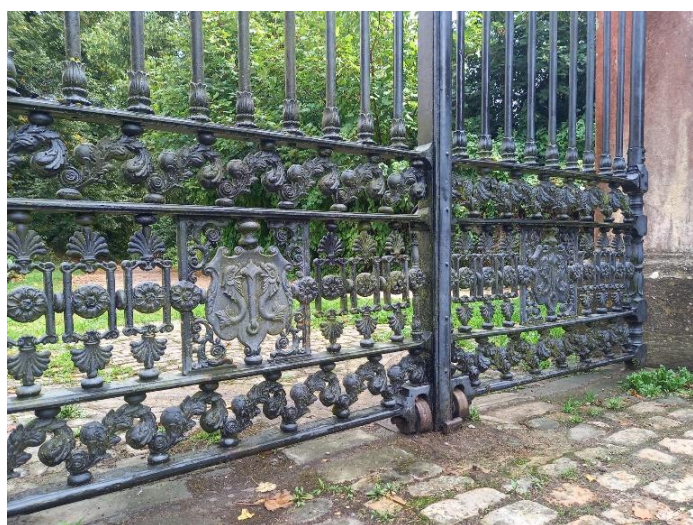
We explored encoding a message, e.g. using binary, in the pattern of blues and purples. However, we failed to find anything appealing for a 120-bit message so decided to leave this as random.

The coded message is

[Start new trail at devil hangers csokl. Ascend kcslo to kscol and continue past lckso. From dbregi pass dolphins and head to the greedy right horse.](#) **[Code 22]**

With the lock and bridge numbers decoded, this is a dead giveaway for the approach to the treasure location, i.e. the Kennet and Avon Canal through Devizes and the ascent to the Devizes (Roundway) White Horse. As such, it deserved the protection of a difficult cipher. It proved to be too difficult, hence the *New Year message*.

The encoded lock and bridge numbers (see section *Photos of Locks and Bridges*) are on the Kennet and Avon Canal. Lock 23 is Foxhangers Lock (‘Foxy Devil’); 29 to 44 form the Caen Hill flight and 50 is in the middle of Devizes. dbregi is bridge 139, at the south end of Quakers Walk; the gate onto Quakers Walk bears the dolphin emblems of Edward Colston (see *Outer white cells* section). The Roundway white horse figure was designed by Peter Trevor Greed (as attested by the plaque on the kissing gate leading to it from the car park). It also faces right (as defined in the message communicated by the *White horses* code), so is the ‘greedy right horse’.



Blue rectangles: MIST CANDLE Playfair

The first blue rectangle is overlaid on an electrical diagram of a Wheatstone Bridge. Charles Wheatstone was also the inventor of the Playfair cipher, so this is a strong hint that the LYNDT... ciphertext in the blue box on p7 is Playfair **[MIST 01]**, and that the other four blue boxes (echoing the four rectangles in the diagram) somehow provide the keyword. The questions and the ciphertext all use the Bahnschrift font, suggesting German.

The questions fall into two families: ‘Germans’ and canals. The German questions use translations of given words into German to provide surnames. Some need further treatment, e.g. adding English words or letters. The words to be translated are always contiguous and either preceded or followed ‘German’ or ‘in Germany’. The last part of the clue provided the field in which the relevant person excelled. Translation is always needed, so Martina Gedeck (German actress who appeared in *The Wall*) doesn’t fit the pattern. These were intended to be fairly straightforward: we wanted this puzzle to be solved. The canal questions were a miscellany and needed some diligent Googling. Clueing the keyword twice, once with the ‘Germans’ and once with the canals, allowed solvers who had partial solutions (but sufficient answers to reveal the correlation) to fill in the blanks and derive the Playfair keyword.

The German clues tied in with the treasure being in Leipzig Plantation.

Question	Answer	Letter
Which priapic sight filled Borrow’s mind with wonder?	George Borrow described the Marple Aqueduct as the ‘stupendous erection near Stockport, which by-the-bye filled my mind when a boy with wonder’ [MIST 06] .	M
German morning star game theorist	Austrian (although German-born) mathematician Oskar Morgenstern (MORGEN STERN) [MIST 07]	M
Who planned to stop the Nazis by defending canals?	General Edmund Ironside , whose Stop Lines were often based on canals. There are pill boxes by the Kennet and Avon, for example. The one in Devizes is now a bat cave. We didn’t spot any superheroes [MIST 08] .	I
In <i>The Wall</i> , German actress lost Europe	Rebecca Indermaur (IN DER MAUER minus E: rather contorted, but the other options for “I” were worse) [MIST 09]	I
German bouquet composer	Any of Johann I / Johann II / Josef / Eduard (all Austrian)/ Richard (German) Strauss (STRAUSS) [MIST 10]	S
Pitch German quickly turned to master on board	Prussian-born chess grandmaster Siegbert Tarrasch (TAR (pitch) RASCH) [MIST 11]	T
Which canal town has two rivers in its name?	Stourport-on-Severn . (We thought that this was the only one, but actually also allowed Bradford-on-Avon as Bradford is on the K&A canal, and Stratford-upon-Avon) [MIST 12]	S
Where is the Great Wall blue?	The Great Wall of Tod (Todmorden), above the Rochdale canal, is made of blue bricks [MIST 13]	T
Can German goal come from a set counter?	German set theorist Georg Cantor (CAN TOR) [MIST 14]	C
German eagle swam successfully	Austrian swimmer Margarete Adler (ADLER) [MIST 15]	A

New man in Germany is a mathematician	Austro-Hungarian / American mathematician John von Neumann (NEU MANN) [MIST 16]	N
Where did the boatmen find Kate?	The village of Catherine-de-Barnes was known as Kate to working boatmen, who often used special names for canal villages, lock flights or junctions. Locals apparently call it Catney – presumably there’s someone who calls it by its posh real name [MIST 17] .	C
From where did Nigel bring coals to Newcastle?	Sir Nigel Gresley's Canal was a private canal between Apedale and Newcastle-under-Lyme. This Gresley lived in the eighteenth century, so didn’t build trains [MIST 18] .	A
Which was the last canal in England built to carry freight?	The New Junction Canal , built in 1905 [MIST 19]	N
In London, proof is obtained on a thematic road. On which branch is it done in Birmingham?	The London Gun Proof House is on the A13. The Birmingham equivalent is on the Digbeth branch canal [MIST 20] .	D
About a mile in Germany, the mountain he climbed first was over five high (as was a second)	Austrian mountaineer Kurt Diemberger , first ascents of two 8000m+ mountains, Broad Peak (with Hermann Buhl) and Dhaulagiri (DIE BERG ER around M) [MIST 21]	D
Long German film director	Austrian-born film director Fritz Lang (LANG) [MIST 22]	L
1st German physicist	German-born Albert Einstein (EIN STEIN; st= stone as in a weight. And (of course) a link to the einstein tiles) [MIST 23]	E
Which canal bridge, east of a group of witches, recalls a work by Plato?	Laches Bridge (bridge 73 on the Staffs & Worcs Canal) is near the village of Coven; Laches is a book by Plato [MIST 24] .	L
She grew up by the canal in Shepperton and used four surnames of equal length. By which is she best known?	George Eliot = Mary-Ann Evans (her maiden name) / Lewes (her married lover’s name, which she used for 20 years plus) / Cross (her married name in later life). Shepperton is the name used in Eliot’s fiction for the real canal-side village of Chilvers Coton, where she grew up; no connection with the SW London suburb [MIST 25] .	E

The word ‘German’ refers to the language and not necessarily the person; indeed, most of the ‘Germans’ are deliberately non-German. Both the ‘Germans’ and the canals spell out MISTCANDLE **[Mist 02]**. Using this as the Playfair keyword generates the message

[translate key and read Wiktionary figuratively; possibly piscine but not French \[MIST 03\]](#)

Translating MISTCANDLE into German (of course!) gives NEBELKERZE **[MIST 04]**. Wiktionary gives literal meanings of ‘smoke grenade’ etc, and a figurative meaning of **red herring**: piscine as in ‘fishy’ rather than the French translation ‘swimming pool’. So, this was the traditional red herring. Sorry.

The arrangement of the clues in the blue boxes is not random. The first box has gaps between the first and second and the second and third clues, but not between the third and fourth. The other boxes have no gaps. If we denote ‘German’ questions as 0 / short and canal questions as 1 / long (after all, canals are longer than Germans), then we have 1 0 10 | 001100 | 10000 | 11100. Or in Morse code, **TEN? 13**, alluding to the thematic representation of 13 as 10 in base 13. Not especially helpful, but the best phrase we could come up with that used precisely ten dots and ten dashes **[MIST 05]**. Nobody spotted this one!

Pink rectangles: Fox Covert message

The pink boxes contained ‘question’ triplets, reading downwards. Designating the original order for the pink blocks (example below) as ABCDEFGHIJ, they were presented in the mixed-up order BADHICGEFJ, to provide a little extra challenge. This is actually the 371293rd dictionary permutation of the original string, which is the (sub-thematic) 5th power of (thematic) 13, although we didn’t really expect any of the teams to spot this **[Code 25]**. Nobody did.

4	4	1	4	3	3	1	5	2	2	5	1	1	3	5
5	6	4	5	2	3	5	2	2	6	3	5	5	6	5
4	2	5	5	1	2	2	1	5	1	1	1	4	5	4

- A: JOURNEYJUSTHALF
- B: AMILENEFROMUFFI
- C: NGTONTOFINDFOXC
- D: OVERTNOBABBLING
- E: BROOKHEREITISBO
- F: RDEREDBYTHEOLDW
- G: ILTSANDBERKSCAN
- H: ALENJOYTHERESTO
- I: REDTOWPATHANDTH
- J: EMANYSMALLPATHS

Journey just half a mile NE from Uffington to find Fox Covert. No babbling brook here; it is bordered by the old Wilts and Berks Canal. Enjoy the restored towpath and the many small paths. **[Code 26]**

This message — unsurprisingly perhaps given the colour of the background — was a partial red herring. The main purpose of including it was to ensure that the answer to each of the ‘triplet’ questions, including the Polybius ones, was used in at least one message. However, we did make a mistake in setting and did not include a question for triplet 253 **[Bonus 01]**.

There were 48 letters not used in the ‘locks and bridges’ or ‘Listener’ messages, including six Bs (hence ‘babbling brook’) and three Js. With its deliberate repeat of PATH, it pointed to a feasible treasure location near Uffington (Oxon) and its White Horse, adjacent to a thematic canal and with a great name. The ‘many small paths’ in a wood was a nod to the paths in the CATastrophe game from ATH 2022. However, the location does not fit nicely with any of the other ‘treasure trail’ messages — it’s not on a long-distance path, isn’t really a plantation, is too far from the nearest white horse, has no car park, no swings, no yolk stile and no metal seat. Some, although admittedly not all, of that information could be gleaned without making a visit.

But one of the pleasures of an Armchair Treasure Hunt is filling in messages as they gradually emerge and using inferred letters to help provide or refine the answers to questions. Cross-referencing the triplets from this message with the other messages that are derived from the triplet answers provides some very useful confirmations. So, solving it wasn’t completely futile — unless it led you to visit Fox Covert in the hope of finding some treasure, of course.

Footpath Perambulation

The table below shows the distances of the various segments of the Long-Distance Footpaths. The LDWA site was taken to define the routes of the paths, but gives only the total lengths. However, the LDWA definitions differ from other sources (e.g. walking books or other websites) which can give widely differing measurements for the length of each path. The measurements below were taken using MemoryMap.

I downloaded the .gpx files from LDWA to give the definitive route and then edited the starts and ends of the paths on MemoryMap to produce the lengths.


Path Name	Page	Start	Finish	Dist.	Cumul-ative
Ridgeway National Trail	4	Huntercombe Golf Club 1st Tee	Ivinghoe Beacon	33.9	33.9

Path Name	Page	Start	Finish	Dist.	Cumulative
Icknield Way	12	Ivinghoe Beacon	Upper Sundon	17.1	51.0
Icknield Way	12	Upper Sundon	Knettishall	96.5	147.5
Peddars Way	14	Knettishall	Shadwell Crossing	4.5	152.0
Hereward Way	14	Shadwell Crossing	Whittlesey	66.8	218.8
Hereward Way	14	Whittlesey	Whitwell	35.1	253.9
Viking Way	8	Whitwell	Lincoln	57.9	311.8
Viking Way	8	Lincoln	Ludford Junction	49.5	361.3
Viking Way	8	Ludford Junction	South Humber Bridge	35.0	396.3
Humber Bridge	8	South Humber Bridge	Humber Bridge North	3.2	399.5
Yorkshire Wolds Way	2	Humber Bridge North	Filey Brigg	76.1	475.7
Cleveland Way	11	Filey Brigg	Mount Grace Wood	82.5	558.1
Cleveland Way	11	Mount Grace Wood	Kilburn White Horse	13.7	571.8
Cleveland Way	16	Kilburn White Horse	Mount Grace Wood		585.5
Wainwright Coast to Coast Walk	16	Mount Grace Wood	Marrick	31.7	617.2
Great English Walk North	1	Marrick	Hebden Bridge Junction	85.8	703.0
Great English Walk North	1	Hebden Bridge Junction	Hathersage	48.9	751.9
Great English Walk South	15	Hathersage	Alstonefield Junction	31.0	782.9
Great English Walk South	15	Alstonefield Junction	Malpas	69.4	852.3
Great English Walk South	15	Malpas	Wem	17.1	869.4
Great English Walk South	15	Wem	Uffington Holy Trinity	12.3	881.7
Shropshire Way	6	Uffington Holy Trinity	Shawbirch Rd bridge	10.9	892.6
Silkin Way	3	Shawbirch Rd bridge	Hay Inclined Plane	12.2	904.8
Monarch's Way - North	10	Hay Inclined Plane	Boscobel House	15.9	920.7
Monarch's Way - North	10	Boscobel House	Snitterfield White Horse Hill	80.1	1000.8
Monarch's Way - North	10	Snitterfield White Horse Hill	Stratford RSC	3.6	1004.4
Monarch's Way - Middle	9	Stratford RSC	Trewsbury junction	59.1	1063.5
Monarch's Way - Middle	9	Trewsbury junction	Chipping Sodbury	26.8	1090.3
Monarch's Way - South	5	Chipping Sodbury	Abbots Leigh	25.6	1115.9
Monarch's Way - South	5	Abbots Leigh	Charmouth	89.6	1205.5
Monarch's Way - South	5	Charmouth	Hindon	75.7	1281.2
Wessex Ridgeway	7	Hindon	Thirteen Hundred Down is visible from here	16.2	1297.4
Wessex Ridgeway	7	Thirteen Hundred Down	Westbury White Horse	2.6	1300.0
Wessex Ridgeway	7	Westbury White Horse	Green Street on Overton Down	33.1	1333.1

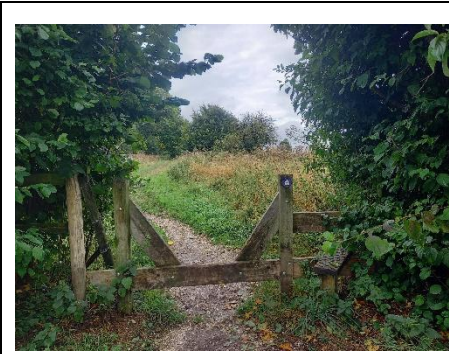
Path Name	Page	Start	Finish	Dist.	Cumulative
Ridgeway National Trail	13	Green Street on Overton Down	Uffington White Horse (Castle)	20.2	1353.3
Ridgeway National Trail	13	Uffington White Horse (Castle)	Goring Bridge	21.4	1374.7
Ridgeway National Trail	4	Goring Bridge	Huntercombe Golf Club 1st Tee	9.8	1384.5

Treasure Location

The treasure box was in Leipzig Plantation, near Devizes. The messages to take you there are below.

Message	Interpretation
The lion points at the stone axe route that all of you would love to chart. It's clear that questers seeking loot must first walk on to find the start.	You need to get to the correct start point
Tara is at start	Tara King marks the start
Foxy devil pass thru start point lighthouse and then ramble widdershins MCCC miles to B of E	Pass through Start Point Lighthouse to Huntercombe, on the reverse of that tile, then walk 1300 miles on the mapped long-distance footpaths to get to the Beginning of the End
Beginning of the end is thematic C miles anticlockwise after start	How far to travel on this perambulation to reach the beginning of the end
	Rebus conveying that 'Beginning of the End' is Thirteen Hundred Down
Round and round and round he goes where to stop no one knows follow the mapped path segments to build a chain look to start point for the start point travel the correct distance to reach beginning of the end	Reinforcing the perambulation
Drop anchor at the nearest horse to the beginning of the end and now follow his new thematic trail	From the Westbury White Horse (nearest to Thirteen Hundred Down), switch onto the White Horse Trail (WHYT)
Start new trail at devil hangers csokl. Ascend kcslo to kscol and continue past lckso. From dbregi pass dolphins and head to the greedy right horse.	From F oxhangers lock on the WHT (number 23 on the Kennet and avon Canal), climb the Caen Hill flight of locks (29 to 44), continue past lock 50 in the middle of Devizes to bridge 139. Turn onto Quakers Walk and head for the Devizes White Horse (see <i>Blue / purple number grid, page 2</i>)
John required fifteen pounds to ascend which incline in the early nineteenth century?	Pointer to the Caen Hill flight of locks
The statue was dumped into the harbour. What adorned the corners of its plinth?	Pointer to Edward Colston, and his dolphins on the gates at Quakers Walk
Go for right horse	Head for the only one of the Wiltshire White Horses that faces to the right.

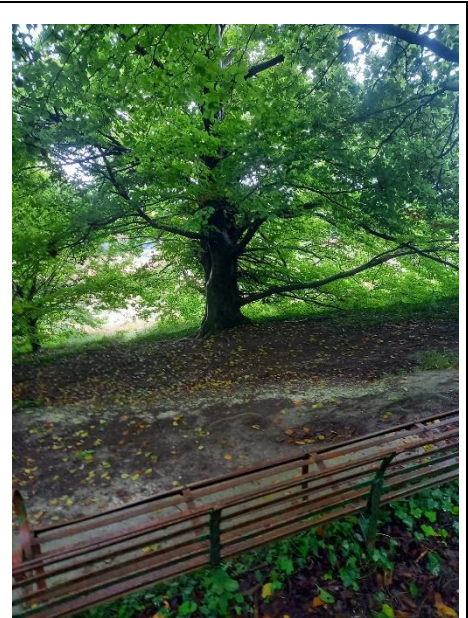
Message	Interpretation
<p>From the horses tail walk through the car park over a low stile and into the plantation. Follow the path through to the yolk stile at the far end. Play on the swings if you like on the way. You are now within a furlong of the treasure.</p>	<p>Self-explanatory. The 'plantation' is Leipzig Plantation. It's thematic as it's named after Battle of Leipzig, which took place in 1813 [Bonus 10]. See photos below.</p>
<p>FROM YOLK: head 40m S.E. to METAL SEAT; sit on seat & regard treasure tree.</p>	<p>See photos below.</p>



Low stile

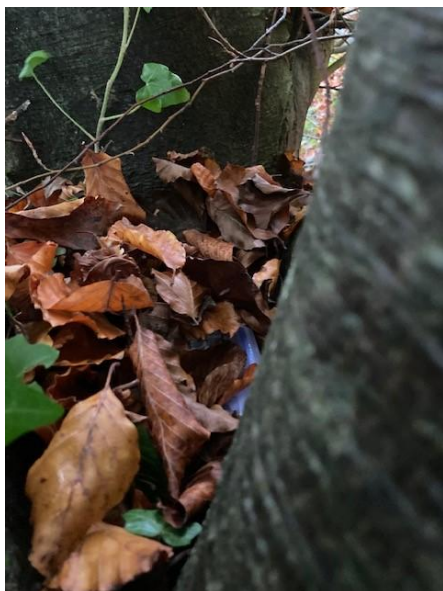


Yolk stile



Metal seat and treasure tree

The W3W address of the treasure tree is [///blatantly.plunge.dean](https://www.what3words.com/?q=///blatantly.plunge.dean). The treasure was hidden in a small box about three feet up in the middle of the trunk where the branches split out.



Appendix: List of waterways

Page	Waterway	Status
1	Bridgewater Canal Trafford Park to Pomona Lock	Navigable
1	Bridgewater Canal Pomona Lock to River Irwell	Navigable
1	Bridgewater Canal Pomona Lock to Castlefield Basin	Navigable
1	Leeds & Liverpool canal (Leigh Branch)	Navigable
1	River Ouse Derwent to Goole	Navigable
1	River Ouse Source to Derwent	Navigable
1	Barnsley Canal	Disused
1	Bradford Canal	Disused
1	River Ure Source to Ripon	Disused
1	River Ure Ripon to River Ouse	Navigable
1	Aire & Calder Navigation - Leeds to Castleford Junction	Navigable
1	Aire & Calder Navigation - Knottingley to Selby Canal	Navigable
1	Aire & Calder Navigation - Castleford Junction to Goole	Navigable
1	Aire & Calder Navigation - Castleford Junction to C&H Nav	Navigable
1	Calder and Hebble Navigation	Navigable
1	Calder & Hebble Navigation Halifax Branch	Disused
1	Stockport Branch canal	Disused
1	New Islington Marina (from Old Islington Branch)	Navigable
1	Fletcher's Canal	Disused
1	Hollinwood Branch Canal	Disused
1	Fairbottom Branch Canal	Disused
1	New Junction Canal 5.5 miles	Navigable
1	Ripon Canal 2.3 miles	Navigable
1	Huddersfield Broad Canal 3.7 miles	Navigable
1	Sheffield & South Yorkshire Navigation 23 Miles	Navigable
1	Sheffield and Tinsley Canal	Navigable
1	Dearne and Dove Canal	Disused
1	Dearne and Dove Canal Worsbrough Branch	Disused
1	Dearne and Dove Canal Elsecar Branch	Disused
1	Selby Navigation	Navigable
1	Rochdale Canal 32 miles	Navigable
1	Manchester, Bolton and Bury Canal	Disused
1	Manchester, Bolton and Bury Canal Bolton Arm	Disused
1	Bridgewater Canal Trafford Park to Leigh 10.8 miles	Navigable
1	Peak Forest Buxworth Branch 0.7 miles	Navigable
1	Peak Forest Canal 15 miles	Navigable
1	Ashton Canal 6.8 miles	Navigable
1	Huddersfield Narrow Canal 19.3 miles	Navigable
1	Leeds And Liverpool Canal Leeds to Leigh Branch	Navigable
2	River Derwent	Navigable
2	Pocklington Canal 9.5 miles	Navigable
2	Market Weighton Canal (disused section)	Disused

Page	Waterway	Status
2	River Ouse Derwent to Humber	Navigable
2	River Humber Source to Victoria Dock (North)	Navigable
2	Market Weighton Canal	Navigable
2	Beverley Beck	Navigable
2	Leven Canal	Disused
2	Driffield Navigation	Navigable
3	Shropshire Union Newport Branch to Wappenshall	Disused
3	Shropshire Union Humber Branch	Disused
3	Coalbrookdale Branch	Disused
3	Donnington Wood Canal	Disused
3	Ketley Canal	Disused
3	Lilleshall to Pitchcroft Limekiln canal	Disused
3	Pitchcroft branch	Disused
3	Shropshire Canal 7.2 miles	Disused
3	Shropshire Union Trench Branch	Disused
3	Wombridge Canal	Disused
3	Lilleshall tub canal 1771	Disused
4	London Docklands (old City Canal)	Navigable
4	Thames 7 Reading to Brentford	Navigable
4	Thames 8 Brentford to Thames Barrier	Navigable
4	Thames 4.1 Isis Lock Oxford to Moulsoford	Navigable
4	Thames 6 Goring to Reading	Navigable
4	Thames 5 Moulsoford to Goring	Navigable
4	Grand Union Canal London to Braunston Junction	Navigable
4	Kensington Canal	Disused
4	Grosvenor Canal	Disused
4	Grand Surrey Canal	Disused
4	Limehouse Cut 1.6 miles	Navigable
4	Regents Canal	Navigable
4	Hertford Union Canal	Navigable
4	Grand Union Canal - Wendover Arm	Navigable
4	Grand Union Canal - Slough Arm	Navigable
4	Grand Union Canal - Paddington Arm	Navigable
4	Grand Union Canal - Northampton Arm	Navigable
4	Grand Union Canal - Aylesbury Arm	Navigable
4	Newport Pagnell Canal	Disused
4	Leicester line Canal	Navigable
4	Grand Union Canal - Buckingham Arm	Disused
5	Somerset Coal Canal (Radstock Branch)	Disused
5	Chard Canal	Disused
5	River Parrett	Navigable
5	Kennet and Avon Canal Keynsham to Avonmouth	Navigable
5	Kennet and Avon Canal Semington Bridge to Bath	Navigable

Page	Waterway	Status
5	Westport Canal	Disused
5	Somerset Coal Canal	Disused
5	Glastonbury Medieval Canal	Disused
5	Glastonbury Canal	Disused
5	Galton's Canal	Disused
5	Bridgwater and Taunton Canal 14.5 miles	Navigable
5	Kennet and Avon Canal Bath to Keynsham	Navigable
6	River Severn 1 Pool Quay to Shrewsbury	Navigable
6	River Severn 2 Shrewsbury to Coalport Bridge	Navigable
6	Shropshire Union Newport Branch from Wappenshall	Disused
7	Wilts & Berks Calne Branch 3 miles	Disused
7	Wilts & Berks Canal Swindon to Semington 26.2 miles	Disused
7	Wilts & Berks Chippenham Branch 1.6 miles	Disused
7	Kennet and Avon Canal Honeystreet to Semington Bridge	Navigable
8	Louth Canal	Disused
8	River Ancholme	Navigable
8	Caistor Canal	Disused
8	River Humber Source to Sea (South)	Navigable
8	River Trent Upper Trent 9 miles	Navigable
8	River Trent (Lower)	Navigable
8	River Soar 23.2 miles	Navigable
8	Sleaford Navigation	Non-Navigable
8	Kyme Eau	Navigable
8	Oakham Canal	Disused
8	Melton Mowbray Navigation	Disused
8	Horncastle Canal	Disused
8	Fosdyke Navigation 11.3 miles	Navigable
8	River Witham 36.5 miles	Navigable
8	Grantham Canal	Navigable
9	Wilts & Berks canal (North Wilts Branch) 8.5 miles	Disused
9	Stroudwater Navigation 8.9 miles	Disused
9	Coombe Hill Canal (Gloucestershire)	Disused
9	Gloucester and Sharpness Canal	Navigable
9	Herefordshire and Gloucestershire Canal	Disused
9	Lydney Canal	Disused
9	River Severn 6 Worcester South to Gloucester Docks	Navigable
9	River Severn 7 Gloucester to Severn Bridge	Navigable
9	Thames 2 Path NT Lechlade to Bablock Hythe	Navigable
9	Thames 0 Source to Hailstone NN	Non-Navigable
9	Thames 3 Babcock Hythe to Farmoor Rsvr	Navigable
9	Thames 1 Hailstone to Lechlade NN	Non-Navigable
9	Thames and Severn Canal to Latton	Disused
9	Thames and Severn Canal Latton to Lechlade	Disused

Page	Waterway	Status
9	Oxford Canal South Oxford to Braunston Junction	Navigable
9	River Avon (Warwickshire)	Navigable
9	Thames 4 Farmoor Rsvr to Isis Lock Oxford	Navigable
9	Pidcocks Canal	Disused
9	Hereford & Gloucester Coal Branch	Disused
10	Ashby-de-la-Zouch Canal	Navigable
10	Anson Branch	Disused
10	Bentley Canal	Disused
10	Bentley Canal Neachell Branch	Disused
10	Seeswood Canal	Disused
10	Griff Hollows Canal	Disused
10	Birmingham and Warwick Junction Canal	Navigable
10	Digbeth Branch Canal	Navigable
10	Grand Union Canal Braunston Junction to Birmingham Bordsley	Navigable
10	River Severn 5 Lincombe Lock to Worcester South	Navigable
10	River Severn 4 Bewdley to Lincombe Lock	Navigable
10	River Severn 3 Coalport to Bewdley	Navigable
10	Walsall Canal 8 miles	Navigable
10	Wednesbury Old Canal (1,2 miles)	Navigable
10	Wednesbury Old Canal Ridgacre Branch	Disused
10	Lichfield Canal	Disused
10	Cannock Extension Canal	Disused
10	Hatherton Canal	Disused
10	Droitwich Canal 7.4 miles	Navigable
10	Oxford Canal North Braunston Junction to Coventry	Navigable
10	Staffordshire And Worcestershire Canal	Navigable
10	Worcester And Birmingham Canal	Navigable
10	Kingswood Arm (North Stratford Canal) 0.25 miles	Navigable
10	Anglesey Branch 1.5 miles	Disused
10	Birmingham New Main Line Canal 8.4 miles	Navigable
10	Bradley Arm (aka Wednesbury Oak Loop) 0.6 miles	Navigable
10	Cannock Extension Canal 1.5 miles	Navigable
10	Daw End Canal 5.4 miles	Navigable
10	Dudley No 1 Canal 4.6 miles	Navigable
10	Dudley No 2 Canal 5.5 miles	Navigable
10	Dudley Tunnel Branch 2.1 miles	Navigable
10	Fens Branch 1 mile	Navigable
10	Netherton Tunnel Branch 2.4 miles	Navigable
10	Rushall Canal 3 miles	Navigable
10	Stourbridge Canal 5.8 miles	Navigable
10	Stourbridge Town Arm 1.3 miles	Navigable
10	Tame Valley Canal 8.5 miles	Navigable
10	Wyrley and Essington Canal 16.5 miles	Navigable

Page	Waterway	Status
10	Titford Canal 1.2 miles	Navigable
10	Birmingham Old Main Line 17.3 miles	Navigable
10	Walsall Town Arm 0.3 miles	Navigable
10	South Stratford Canal 13 miles	Navigable
10	Birmingham and Fazeley Canal 15.1 miles	Navigable
10	North Stratford Canal 12.4 miles	Navigable
10	Coventry Canal	Navigable
11	River Tees	Navigable
12	River Great Ouse (Upper - Earith to Bedford)	Navigable
12	River Cam from Great Ouse to Cambridge	Navigable
12	River Great Ouse Popes Junction to Earith	Navigable
12	Devil's Ditch	Disused
12	Reach Lode	Navigable
12	Wicken and Monks Lode	Navigable
12	Burwell Lode	Navigable
13	Thames 4.1 Isis Lock Oxford to Moulsoford	Navigable
13	Thames 6 Goring to Reading	Navigable
13	Thames 5 Moulsoford to Goring	Navigable
12	Swaffham Bulbeck Lode	Navigable
12	Swaffham Bulbeck Lode NN	Non-Navigable
13	Wilts & Berks Canal Longcote Branch	Disused
13	Kennet and Avon Canal Reading to Honeystreet	Navigable
13	Wilts & Berks Canal Abingdon to Swindon 26 miles	Disused
13	Wilts & Berks Wantage Branch (old) 0.7 miles	Disused
14	River Little Ouse (upper section not navigable)	Non-Navigable
14	Soham Lode (NN)	Non-Navigable
14	River Great Ouse Popes Junction to Earith	Navigable
14	River Little Ouse (upper section not navigable)	Non-Navigable
14	River Little Ouse	Navigable
14	River Welland (upper stretch)	Non-Navigable
14	Stamford Canal	Navigable
14	River Welland	Navigable
14	New Bedford River (Hundred Foot Drain)	Navigable
14	River Great Ouse to Popes Junction	Navigable
14	River Great Ouse Relief Channel	Navigable
14	Old Bedford River	Navigable
14	Forty Foot or Vermuden's Drain	Navigable
14	Middle Level Main Drain	Non-Navigable
14	Twenty Foot River	Navigable
14	Bevills Leam	Navigable
14	Great Raveley Drain	Navigable
14	Monks Lode	Navigable
14	New Dyke	Navigable

Page	Waterway	Status
14	High Lode	Navigable
14	Sixteen Foot River	Navigable
14	New Popham's Eau	Navigable
14	Old Popham's Eau	Navigable
14	Well Creek	Navigable
14	Old River Nene	Navigable
14	New Cut / Black Ham	Navigable
14	Kings Dyke	Navigable
14	Whittlesey Dyke	Navigable
15	Trent & Mersey Canal North	Navigable
15	Macclesfield Canal T&M Junction	Navigable
15	Trent And Mersey Canal South	Navigable
15	Prees Branch, Llangollen canal	Non-Navigable
15	Derby Canal (Little Eaton Branch)	Disused
15	Derby Canal	Disused
15	Bridgewater Canal Runcorn to Trafford Park	Navigable
15	Manchester Ship Canal to Pomona Docks	Navigable
15	Nutbrook Canal	Disused
15	Trent & Mersey - Wardle Canal (shortest in England)	Navigable
15	Shropshire Union Canal Middlewich Branch	Navigable
15	Uttoxeter Canal	Disused
15	Newcastle-under-Lyme Canal	Disused
15	Cromford Canal (separated, mostly disused) 14 miles	Disused
15	Trent & Mersey - Caldon Canal 18 miles	Navigable
15	Trent & Mersey - Caldon Canal - Leek Branch 2.9 miles	Navigable
15	Nottingham and Beeston Canal 5 miles	Navigable
15	Nottingham canal	Disused
15	St Helens Canal Blackbrook branch	Disused
15	St Helens Branch	Disused
15	St Helens (Sankey) main branch	Disused
15	Prees Branch, Llangollen canal	Navigable
15	Llangollen Canal	Navigable
15	Trent & Mersey Canal - Anderson Lift section	Navigable
15	Weaver Navigation 20 miles	Disused
15	Erewash Canal 11.5 miles	Navigable
15	Macclesfield Canal 26.25 miles	Navigable
15	Shropshire Union Canal	Navigable
15	Montgomery Canal Part 1	Navigable
16	No canals or waterways	